

TM 9-1005-206-14P/1

DEPARTMENT OF THE ARMY TECHNICAL MANUAL

OPERATOR'S, ORGANIZATIONAL, DS, AND GS MAINTENANCE
REPAIR PARTS AND SPECIAL TOOLS LISTS

REVOLVER, CALIBER .38 SPECIAL: COLT,
DETECTIVE SPECIAL, 2-INCH BARREL
(1005-726-5786)

REVOLVER, CALIBER .38 SPECIAL: COLT, POLICE
POSITIVE, 4-INCH BARREL (1005-716-2938)

REVOLVER, CALIBER .38 SPECIAL: S AND W,
K-38 MASTERPIECE, M14, 6-INCH BARREL
(1005-830-2497)

REVOLVER, CALIBER .38 SPECIAL: S AND W,
MILITARY AND POLICE, M10, SQUARE BUTT,
4-INCH BARREL (1005-214-0934)

REVOLVER, CALIBER .38 SPECIAL: S AND W,
MILITARY AND POLICE, M10, ROUND BUTT,
2-INCH BARREL (1005-937-5840)

REVOLVER, CALIBER .38 SPECIAL: S AND W,
MILITARY AND POLICE, M10, ROUND BUTT,
4-INCH BARREL (1005-937-5839)

This manual contains copyright material reproduced by permission of:
Colt's Patent Fire Arms Manufacturing Co., Inc.
(Figures 1, 2, and 7)
Smith and Wesson Inc.
(Figures 3, 4, 5, 6, 8, and 9)

***TM 9-1005-206-14P/1**

Technical Manual }
 No. 9-1005-206-14P/1 }

HEADQUARTERS
 DEPARTMENT OF THE ARMY
 Washington, D.C., 22 February 1971

**OPERATOR'S, ORGANIZATIONAL, DS, AND GS MAINTENANCE
 REPAIR PARTS AND SPECIAL TOOLS LISTS**

**REVOLVER, CAL. .38 SPECIAL: COLT
 DETECTIVE SPECIAL, 2 " BBL
 REVOLVER, CAL. .38 SPECIAL: COLT
 POLICE POSITIVE, 4 " BBL
 REVOLVER, CAL. .38 SPECIAL: S AND W,
 K-38 MASTERPIECE, M14, 6 " BBL
 REVOLVER, CAL. .38 SPECIAL: S AND W,
 MIL AND POL, M10, SQ BUTT, 4 " BBL
 REVOLVER, CAL. .38 SPECIAL: S AND W,
 MIL AND POL, M10, RD BUTT, 2 " BBL
 REVOLVER, CAL. .38 SPECIAL: S AND W,
 MIL AND POL, M10, RD BUTT, 4 " BBL**

This manual is current as of 21 January 1971

		Paragraphs	Pages
SECTION I.	INTRODUCTION.....	1-8	5-12
SECTION II.	MAINTENANCE AND OPERATING SUPPLIES.....		13
SECTION III.	PRESCRIBED LOAD ALLOWANCE.....		14
SECTION IV.	REPAIR PARTS LIST.....		15
SECTION V.	SPECIAL TOOLS, TEST AND SUPPORT EQUIPMENT.....		17
SECTION VI.	REPAIR PARTS LIST		
	Repair Parts For:		
	COLT DETECTIVE SPECIAL AND POLICE POSITIVE, CAL. .38 SPECIAL, REVOLVER, 2 AND 4-INCH BARREL (Fig. 7).....		30
	SMITH AND WESSON MASTERPIECE K-38 CAL. .38 SPECIAL, REVOLVER, M14, 6-INCH BARREL (Fig. 8).....		31
	SMITH AND WESSON MILITARY AND POLICE, CAL. .38 SPECIAL REVOLVER, M10, SQUARE BUTT, 4-INCH BARREL, ROUND BUTT, 2 AND 4-INCH BARREL (Fig. 9).....		32
SECTION VII.	SPECIAL TOOLS, TEST AND SUPPORT EQUIPMENT (Figs. 10 thru 14).....		33-35
SECTION VIII.	INDEX—FEDERAL STOCK NUMBER AND REFERENCE NUMBER CROSS-REFERENCED TO FIGURE AND ITEM NUMBER.....		36

*This manual supersedes TM 9-1005-206-14P/1, 6 September 1962 in its entirety.

LIST OF ILLUSTRATIONS

Number	Title	Page
Figure 1.	Caliber .38 special, Colt detective special revolver, 2-inch barrel—left side view.	5
Figure 2.	Caliber .38 special, Colt police positive revolver, 4-inch barrel—left side view.	6
Figure 3.	Caliber .38 special, Smith and Wesson K-38 masterpiece revolver, model 14, 6-inch barrel—left side view.	6
Figure 4.	Caliber .38 special, Smith and Wesson military and police revolver, model 10, square butt, 4-inch barrel—left side view.	7
Figure 5.	Caliber .38 special, Smith and Wesson military and police revolver, model 10, round butt, 4-inch barrel—left side view.	8
Figure 6.	Caliber .38 special, Smith and Wesson military and police revolver, model 10, round butt, 2-inch barrel—left side view.	9
Figure 7.	Caliber .38 special, Colt detective special and police positive revolver, 2-inch and 4-inch barrel—exploded view.	30
Figure 8.	Caliber .38 special, Smith and Wesson K-38 masterpiece revolver, model 14, 6-inch barrel—exploded view.	31
Figure 9.	Caliber .38 special, Smith and Wesson military and police revolver, model 10, square butt, 4-inch barrel—round butt, 2 and 4-inch barrel—exploded view.	32
Figure 10.	Hip holster for revolver, 2-inch barrel.	33
Figure 11.	Shoulder holster for revolver, 2-inch barrel.	33
Figure 12.	Hip holster for revolver, 2 and 4-inch barrel.	34
Figure 13.	Shoulder holster for revolver, 4-inch barrel.	34
Figure 14.	Shoulder holster for revolver, 2, 4, and 5-inch barrel.	35

Section I. INTRODUCTION

1. Scope

This manual lists basic issue items, repair parts, special tools, and support equipment required for the

performance of organizational direct and general support maintenance of commercial revolvers (figs. 1 through 6).



Figure 1. Caliber .38 special, Colt detective special revolver, 2-inch barrel—left side view.

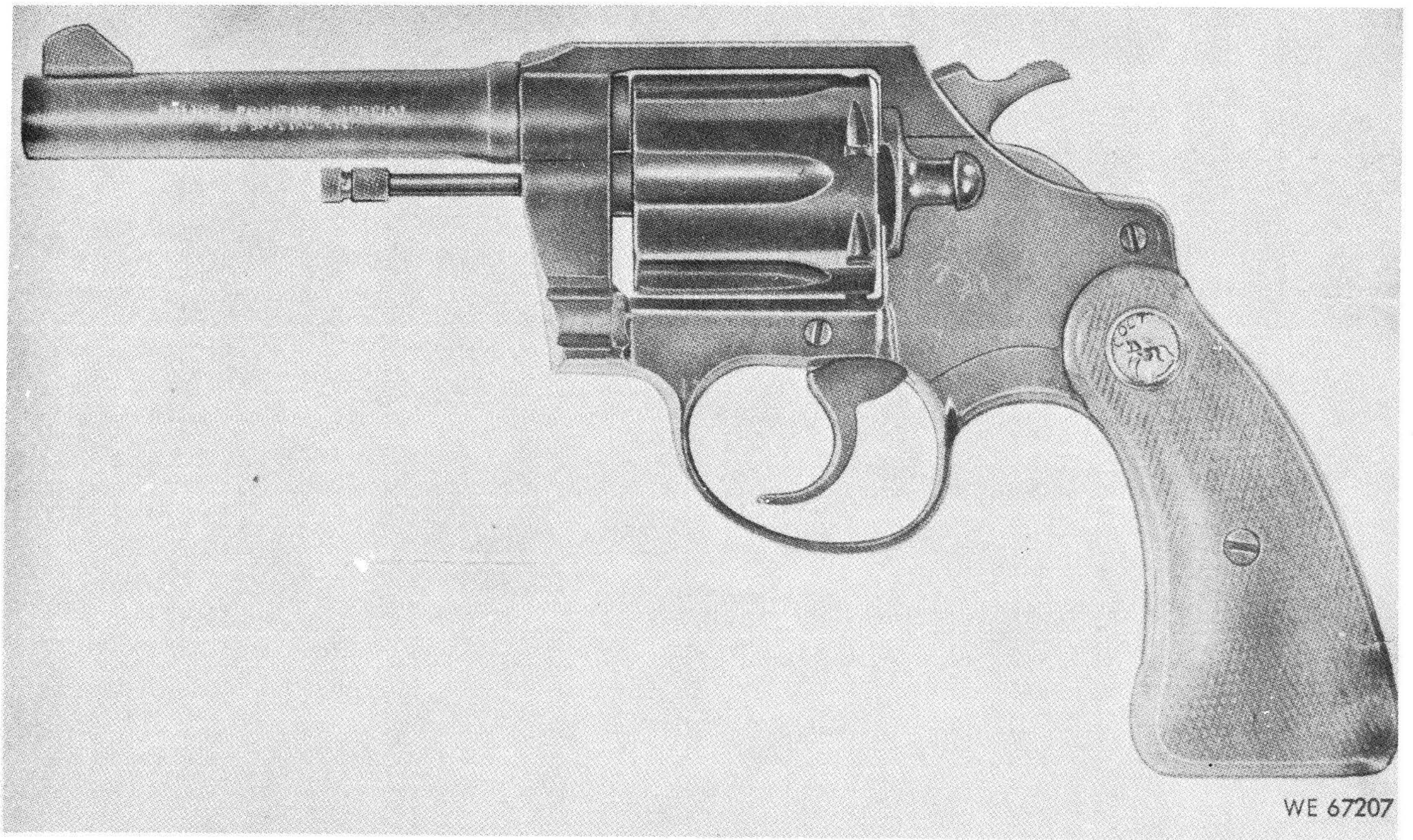


Figure 2. Caliber .38 special. Colt police positive revolver, 4-inch barrel—left side view.

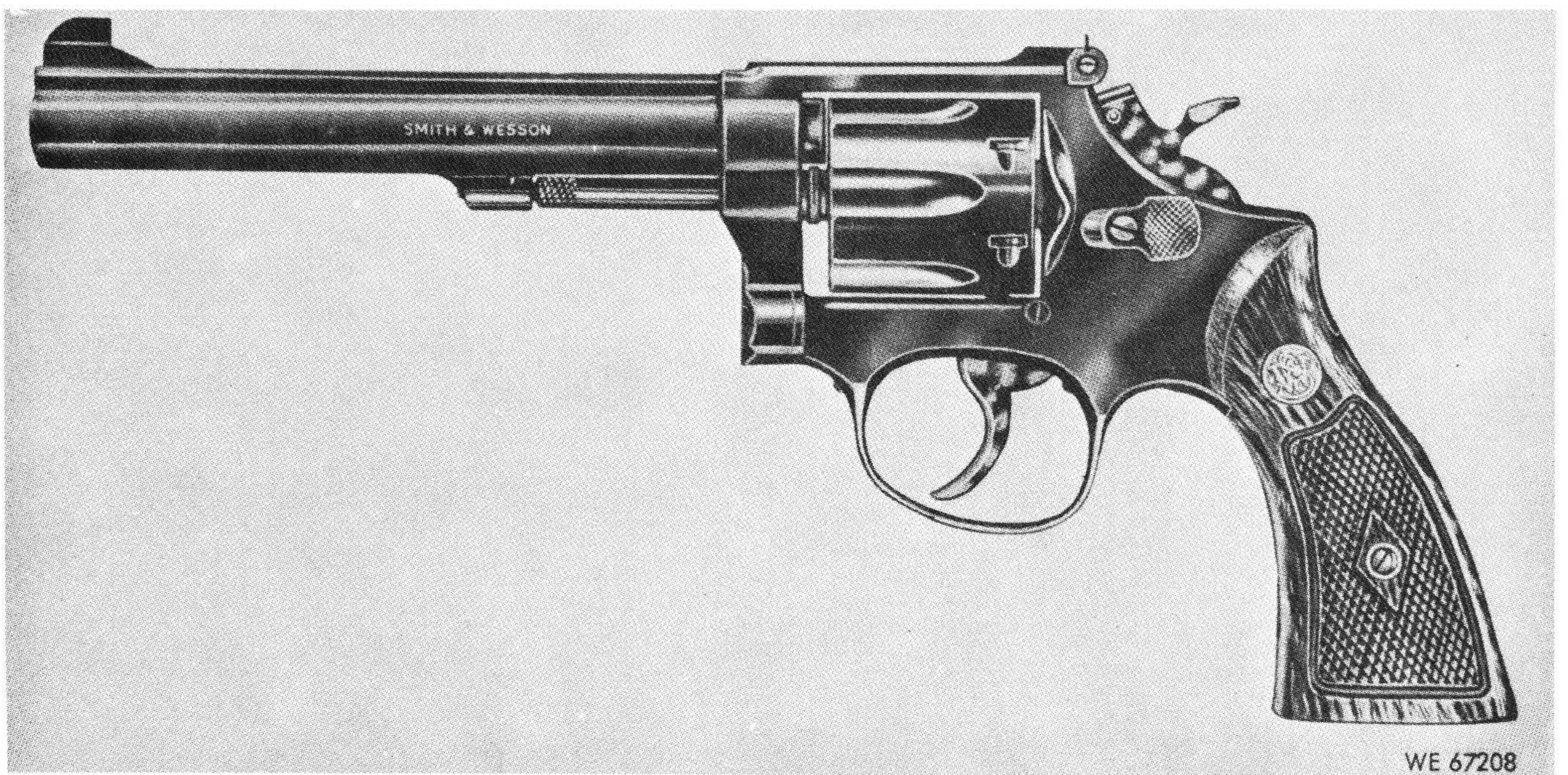


Figure 3. Caliber .38 special. Smith and Wesson K-38 masterpiece revolver, model 14, 6-inch barrel—left side view.

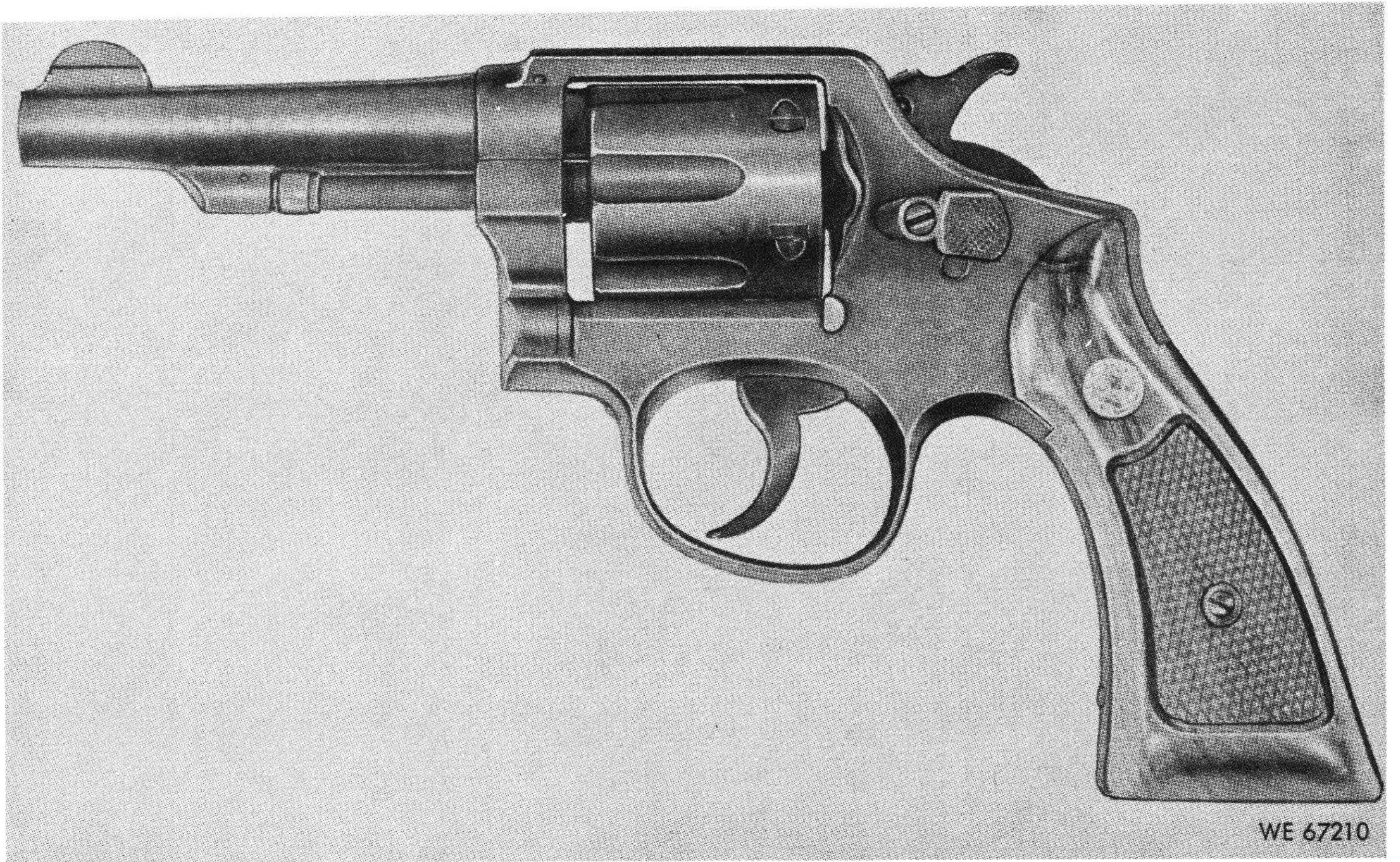


Figure 4. Caliber .38 special. Smith and Wesson military and police revolver, model 10, square butt, 4-inch barrel—left side view.



Figure 5. Caliber .38 special. Smith and Wesson military and police revolver, model 10, round butt, 4-inch barrel—left side view.



Figure 6. Caliber .38 special. Smith and Wesson military and police revolver, model 10, round butt, 2-inch barrel—left side view.

2. General

This Basic Issue items, Repair Parts, and Special Tools List is divided into the following sections:

- a. *Basic Issue Items.* Not applicable.
- b. *Maintenance and Operating Supplies—Section II.* A listing of maintenance and operating supplies required for initial operation.
- c. *Prescribed Load Allowance (PLA)—Section III.* A composite listing of repair parts, special tools, test and support equipment having quantitative allowances for initial stockage at organizational level.
- d. *Repair Parts—Section IV.* A list of repair parts authorized for the performance of maintenance at the organizational level in figure and item number sequence.
- e. *Special Tools, Test and Support Equipment—Section V.* A list of special tools, test and support equipment authorized for the performance of maintenance at the organizational level.
- f. *Repair Parts—Section VI.* A list of repair parts authorized for the performance of maintenance at the direct support and general support level in figure and item number sequence.
- g. *Special Tools, Test and Support Equipment—Section VII.* A list of special tools, test and support equipment authorized for the performance of maintenance at the direct support and general support level.

h. *Federal Stock Number and Reference Number Index—Section VIII.* A list of Federal stock numbers in ascending numerical sequence, followed by a list of reference numbers appearing in all the listings, in ascending alpha-numeric sequence, cross-referenced to the illustration figure number and item number.

3. Explanation of Columns

The following provides an explanation of columns in the tabular lists in Sections II and VII:

a. *Source, Maintenance, and Recoverability Codes (SMR).*

(1) *Source Code.* Indicates the selection status and source for the listed item. Source codes used are:

Code	Explanation
P	Repair Parts, Special Tools and Test Equipment supplied from the GSA/DSA, or Army supply system, and authorized for use at indicated maintenance categories.
P2	Repair Parts, Special Tools and Test Equipment which are procured and stocked for insurance purposes because the combat or military essentiality of the end item dictates that a minimum quantity be available in the supply system.
P9	Assigned to items which are NSA design controlled: unique repair parts, special tools, test, measuring and diagnostic equipment, which are stocked and supplied by the Army COMSEC Logistic System and which are not subject to the provisions of AR 380-41.
P10	Assigned to items which are NSA design controlled: special tools, test, measuring and diagnostic equipment for

<i>Code</i>	<i>Explanation</i>
	COMSEC support, which are accountable under the provisions of AR 380-41, and which are stocked and supplied by the Army COMSEC Logistic System.
M	Repair Parts, Special Tools and Test Equipment which are not procured or stocked, as such, in the supply system, but are to be manufactured at indicated maintenance levels.
A	Assemblies which are not procured or stocked as such but are made up of two or more units. Such component units carry individual stock numbers and descriptions, are procured and stocked separately and can be assembled to form the required assembly at indicated maintenance categories.
X	Parts and assemblies that are not procured or stocked because the failure rate is normally below that of the applicable end item of component. The failure of such part or assembly should result in retirement of the end item from the supply system.
X1	Repair Parts which are not procured or stocked. The requirement for such items will be filled by the next higher assembly or component.
X2	Repair Parts, Special Tools, and Test Equipment which are not stocked and have no foreseen mortality. The indicated maintenance category requiring such repair parts will attempt to obtain the part through cannibalization or salvage, the item may be requisitioned with exception data, from the end item manager, for immediate use.
G	Major assemblies that are procured with PEMA funds for initial issue only as exchange assemblies at DSU and GSU level. These assemblies will not be stocked above DS and GS level or returned to depot supply level.

NOTE

Cannibalization or salvage may be used as a source of supply for any items source coded above except those coded X1 and aircraft support items as restricted by AR 700-42.

(2) *Maintenance Code*. Indicates the lowest category of maintenance authorized to install the listed item. The maintenance level codes are:

<i>Code</i>	<i>Explanation</i>
C	Crew or Operator Maintenance
O	Organizational Maintenance
F	Direct Support Maintenance
H	General Support Maintenance
D	Depot Maintenance

(3) *Recoverability Code*. Indicates whether un-serviceable items should be returned for recovery or salvage. Items not coded are expendable. Recoverability codes are:

<i>Code</i>	<i>Explanation</i>
R	Applied to repair parts (assemblies and components) special tools and test equipment which are considered economically repairable at direct and general support maintenance levels. When the item is no longer economically repairable, it is normally disposed of at the GS level. When supply considerations dictate, some of these repair parts may be listed for automatic return to supply for depot level repair as set forth in AR 710-50. When so listed they will be replaced by supply on exchange basis.
S	Repair Parts, Special Tools, Test Equipment and assemblies which are economically repairable at DSU and GSU activities and which normally are furnished by supply on

<i>Code</i>	<i>Explanation</i>
	an exchange basis. When items are determined by a GSU to be uneconomically repairable, they will be evacuated to a depot for evaluation and analysis before final disposition.
T	Highest dollar value recoverable repair parts special tools and test equipment which are subject to special handling and are issued on an exchange basis. Such items will be repaired or overhauled at depot maintenance activities only. No repair may be accomplished at lower levels.
U	Repair Parts, Special Tools and Test Equipment specifically selected for salvage by reclamation units because of precious metal content, critical materials, high dollar value reusable casings, or castings.

b. Federal Stock Number. Indicates the Federal stock number assigned to the item and will be used for requisitioning purposes.

c. Description. Indicates the Federal item name and any additional description of the item required. The abbreviation "w/e" when used as a part of the nomenclature, indicates the Federal stock number includes all armament, equipment, accessories, and repair parts issued with the item. A part number or other reference number is followed by the applicable five-digit Federal supply code for manufacturers in parentheses.

d. Unit of Measure (U/M). A 2 character alphabetic abbreviation indicating the amount or quantity of the item upon which the allowances are based, e.g., ft, ea, pr, etc.

e. Quantity Incorporated in Unit. Indicates the quantity of the item used in the functional group. A "V" appearing in this column in lieu of a quantity indicates that a definite quantity cannot be indicated (e.g., shims, spacers, etc.).

f. Component Application. Identifies the component application of each maintenance or operating supply item (M&O supplies only).

g. Quantity Required for Initial Operation. Indicates the quantity of each maintenance or operating supply item required for initial operation of the equipment (M&O supplies only).

h. Quantity Required for 8 Hours Operation. Indicates the estimated quantities required for an average 8 hours of operation (M&O supplies only).

i. Notes. Indicates informative notes keyed to data appearing in a preceding column (M&O supplies only).

j. 15-Day Organizational Maintenance Allowances.

(1) The allowance columns are divided into four subcolumns. Indicated in each subcolumn opposite the first appearance of each item is the total quantity of items authorized for the number of equipments supported. Subsequent appearances of the same item will have the letters "REF" in the allowance columns. Items authorized for use as required but not for initial stockage are identified with an asterisk in the allowance column.

(2) The quantitative allowances for organizational level of maintenance represents one initial prescribed load for a 15-day period for the number of equipments supported. Units and organizations authorized additional prescribed loads will multiply the number of prescribed loads authorized by the quantity of repair parts reflected in the appropriate density column to obtain the total quantity of repair parts authorized.

(3) Organizational units providing maintenance for more than 100 of these equipments shall determine the total quantity of parts required by converting the equipment quantity to a decimal factor by placing a decimal point before the next to last digit of the number to indicate hundredths, and multiplying the decimal factor by the parts quantity authorized in the 51-100 allowance column. Example, authorized allowance for 51-100 equipments is 12; for 140 equipments multiply 12 by 140 or 16.80 rounded off to 17 parts required.

(4) Subsequent changes to allowances will be limited as follows: No change in the range of items is authorized. If additional items are considered necessary, recommendations should be forwarded to the Commanding General, U.S. Army Weapons Command, ATTN: AMSWE-SMM-SA, Rock Island, Illinois 61201, for exception or revision to the allowance list. Revision to the range of items authorized will be made by the U.S. Army Weapons Command based upon engineering experience, demand data, or TAERS information.

k. 30-Day DS/GS Maintenance Allowances.

NOTE

Allowances in GS Column are for GS maintenance only.

(1) The allowance columns are divided into three subcolumns. Indicated in each subcolumn, opposite the first appearance of each item, is the total quantity of items authorized for the number of equipments supported. Subsequent appearances of the same item will have the letters "REF" in the applicable allowance columns. Items authorized for use as required but not for initial stockage are identified with an asterisk in the allowance column.

(2) The quantitative allowances for DS/GS levels of maintenance will represent initial stockage for a 30-day period for the number of equipments supported.

(3) Determination of the total quantity of parts required for maintenance of more than 100 of these equipments can be accomplished by converting the equipment quantity to a decimal factor by placing a decimal point before the next to last digit of the number to indicate hundredths, and multiplying the decimal factor by the parts quantity authorized in the 51-100 allowance column. Example, authorized

allowance for 51-100 equipments is 40; for 150 equipments multiply 40 by 1.50 or 60 parts required.

l. 1-Year Allowances Per 100 Equipments/Contingency Planning Purposes. Indicates opposite the first appearance of each item the total quantity required for distribution and contingency planning purposes. The range of items indicates total quantities of all authorized items required to provide for adequate support of 100 equipments for one year.

m. Illustration.

(1) *Figure Number.* Indicates the figure number of the illustration in which the item is shown.

(2) *Item Number.* Indicates the call-out number used to reference the item in the illustration.

4. Special Information

a. Identification of the usable on codes of this publication are:

<i>Code</i>	<i>Used on</i>
A	Revolver, Caliber .38, Special: Colt, Detective Special, 2-inch Barrel—7265786. Revolver, Caliber .38, Special: Colt, Police Positive, 4-inch Barrel—7162938.
B	Revolver, Caliber .38, Special: Colt, Detective Special, 2-inch Barrel—7265786.
C	Revolver, Caliber .38, Special: Colt, Police Positive, 4-inch Barrel—7162938.
D	Revolver, Caliber .38, Special: Smith and Wesson, K-38 Masterpiece, Model 14, 6-inch Barrel—11838700. Revolver, Caliber .38, Special: Smith and Wesson, Military and Police, Model 10, Square Butt, 4-inch Barrel—6740966. Revolver, Caliber .38, Special: Smith and Wesson, Military and Police, Model 10, Round Butt, 2-inch Barrel—8432577. Revolver, Caliber .38, Special: Smith and Wesson, Military and Police, Model 10, Round Butt, 4-inch Barrel—8432576.
E	Revolver, Caliber .38, Special: Smith and Wesson, K-38 Masterpiece, Model 14, 6-inch Barrel—11838700.
F	Revolver, Caliber .38, Special: Smith and Wesson, Military and Police, Model 10, Square Butt, 4-inch Barrel—6740966.
G	Revolver, Caliber .38, Special: Smith and Wesson, Military and Police, Model 10, Round Butt, 2-inch Barrel—8432577.
J	Revolver, Caliber .38, Special: Smith and Wesson, K-38 Masterpiece, Model 14, 6-inch Barrel—11838700. Revolver, Caliber .38, Special: Smith and Wesson, Military and Police, Model 10, Square Butt, 4-inch Barrel—6740966.
K	Revolver, Caliber .38, Special: Smith and Wesson, K-38 Masterpiece, Model 14, 6-inch Barrel—11838700. Revolver, Caliber .38, Special: Smith and Wesson, Military and Police, Model 10, Round Butt, 4-inch Barrel—8432576. Revolver, Caliber .38, Special: Smith and Wesson, Military and Police, Model 10, Square Butt, 4-inch Barrel—6740966.
L	Revolver, Caliber .38, Special: Smith and Wesson, Military and Police, Model 10, Round Butt, 4-inch Barrel—8432576. Revolver, Caliber .38, Special: Smith and Wesson, Military and Police, Model 10, Square Butt, 4-inch Barrel—6740966.
M	Revolver, Caliber .38, Special: Smith and Wesson, Military and Police, Model 10, Round Butt, 4-inch Barrel—8432576. Revolver, Caliber .38, Special: Smith and Wesson, Military and Police, Model 10, Round Butt, 2-inch Barrel—8432577. Revolver, Caliber .38, Special: Smith and Wesson, Military and Police, Model 10, Square Butt, 4-inch Barrel—6740966.
N	Revolver, Caliber .38, Special: Smith and Wesson, Military and Police, Model 10, Round Butt, 2-inch Barrel—8432577.

<i>Code</i>	<i>Used on</i>
	Revolver, Caliber .38, Special: Smith and Wesson, Military and Police, Model 10, Round Butt, 4-inch Barrel—8432576.
P	Revolver, Caliber .38, Special: Colt, Detective Special, 2-inch Barrel—7265786.
	Revolver, Caliber .38, Special: Smith and Wesson, Military and Police, Model 10, Round Butt, 2-inch Barrel—8432577.
Q	Revolver, Caliber .38, Special: Colt, Police Positive, 4-inch Barrel—7162938.
	Revolver, Caliber .38, Special: Smith and Wesson, Military and Police, Model 10, Square Butt, 4-inch Barrel—6740966.
	Revolver, Caliber .38, Special: Smith and Wesson, Military and Police, Model 10, Round Butt, 2-inch Barrel—8432577.
	Revolver, Caliber .38, Special: Smith and Wesson, Military and Police, Model 10, Round Butt, 4-inch Barrel—8432576.
R	Revolver, Caliber .38, Special: Colt, Police Positive, 4-inch Barrel—7162938.
	Revolver, Caliber .38, Special: Smith and Wesson, Military and Police, Model 10, Square Butt, 4-inch Barrel—6740966.
	Revolver, Caliber .38, Special: Smith and Wesson, Military and Police, Model 10, Round Butt, 4-inch Barrel—8432576.

No Code Items applicable to all weapons.

b. Exploded views in sections IV and VI are in disassembly sequence.

5. How to Locate Repair Parts

a. When Federal stock number or reference number is unknown:

(1) *First*. Using the table of contents determine the functional group within which the repair part belongs. This is necessary since illustrations are prepared for functional groups and listings are divided into the same groups.

(2) *Second*. Find the illustration covering the functional group to which the repair part belongs.

(3) *Third*. Identify the repair part on the illustration and note the illustration figure and item number of the repair part.

(4) *Fourth*. Using the Repair Parts Listings, find the functional group to which the repair part belongs and locate the illustration figure and item number noted on the illustration.

b. When Federal stock number or reference number is known:

(1) *First*. Using the Index of Federal Stock Numbers and Reference Numbers find the pertinent Federal stock number or reference number. This index is in ascending FSN sequence followed by a list of reference numbers in alpha-numeric sequence, cross-referenced to the illustration figure number and item number.

(2) *Second*. Using the Repair Part Listing, find the functional group of the repair part and the illustration figure number and item number referenced in the Index of Federal Stock Numbers and Reference Numbers.

6. Abbreviations

Not applicable.

7. Federal Supply Codes for Manufacturers

<i>Code</i>	<i>Manufacturer</i>
13629	Colt Industries Inc.
19204	Rock Island Arsenal
55358	Smith and Wesson
72165	Manufactured Products Division of Control Industries Inc

8. Recommendations for Maintenance Publication Improvements

Report of errors, omissions, and recommendations for improving this publication by the individual user is encouraged. Reports should be submitted on DA Form 2028 (Recommended Changes to DA Publications) and forwarded direct to: Commanding General, U.S. Army Weapons Command, ATTN: AMSWE-SMM-P, Rock Island, Illinois 61201.

Section II. MAINTENANCE AND OPERATING SUPPLIES

(1) Component application	(2) Federal stock number	(3) Description	(4) Qty. required for initial operation	(5) Qty. required for 8 hours operation	(6) Notes
	6850-281-1985	DRY CLEANING SOLVENT: (SD) 1 GAL CAN	*		
	9150-273-2389	LUBRICATING OIL, GENERAL PURPOSE: (PL SPECIAL) 4 OZ CAN	*		
	9150-231-6689	1 QT CAN	*		
	1005-288-3565	SWAB, SMALL ARMS CLEANING: COTTON 2½ SQ (1,000 IN PG)	*		
	6850-224-6657	RIFLE BORE CLEANER: (RBC) 8 OZ CAN	*		

Section III. PRESCRIBED LOAD ALLOWANCE LIST

(1) Federal Stock No.	(2) Description Usable on code	(3) 15-day organizational maint allowance			
		(a) 1-5	(b) 6-20	(c) 21-50	(d) 51-100
	REPAIR PARTS				
	COLT, DETECTIVE AND POLICE POSITIVE SPECIAL REVOLVER, CALIBER .38 SPECIAL, 2 AND 4-INCH BARREL.				
1005-420-5089	DETENT, CRANE LOCK:.....			1	1
1005-420-5115	SCREW, SIDE PLATE:.....				1
1005-523-8069	DETENT, CRANE LOCK:.....			1	1
1005-532-3145	SCREW, SIDE PLATE:.....				1

Section IV. REPAIR PARTS LIST

(1) Source maint and recov code			(2) Federal stock No.	(3) Description Reference number & mfr code Usable on code		(4) Unit of meas	(5) Qty inc in unit	(6) 15 day organizational maintenance alw				(7) Illustration	
(a) Source	(b) Maint	(c) Recov						(a) 1-5	(b) 6-20	(c) 21-50	(d) 51-100	(a) Figure No.	(b) Item No.
REPAIR PARTS FOR:													
COLT, DETECTIVE AND POLICE POSITIVE SPECIAL REVOLVER, CALIBER .38 SPECIAL, 2-INCH AND 4-INCH BARREL													
P	O	5305-133-5847	SCREW, GRIP: C93116-3 (13629)	B	EA	1	*	*	*	*	7	1
P	O	1005-471-3285	SCREW, GRIP: 93121 (13629)	C	EA	1	*	*	*	*	7	1
P	O	1005-086-8282	GRIP, REVOLVER: LEFT HAND AND RIGHT HAND, WALNUT, W/SCREW 8430243 (13629)	B	PR	1	*	*	*	*	7	2
P	O	1005-471-3284	GRIP, REVOLVER: ROUND BUTT, LEFT HAND AND RIGHT HAND, WALNUT W/SCREW 5911095 (19204)	C	PR	1	*	*	*	*	7	2
P	O	1005-532-3145	SCREW, SIDE PLATE: 50350 (72165)	B	EA	2	*	*	*	1	7	3
P	O	1005-420-5115	SCREW, SIDE PLATE: 56176 (13629)	C	EA	2	*	*	*	1	7	3
P	O	1005-602-2236	SCREW, CRANE LOCK: 50515 (13629)	B	EA	1	*	*	*	*	7	8
P	O	1005-420-5090	SCREW, CRANE LOCK: 56079 (13629)	C	EA	1	*	*	*	*	7	8
P	O	1005-523-8089	SPRING, CRANE LOCK: 50516 (72165)	A	EA	1	*	*	*	*	7	9
P	O	1005-523-8069	DETENT, CRANE LOCK: 50517 (72165)	B	EA	1	*	*	1	1	7	10
P	O	1005-420-5089	DETENT, CRANE LOCK: 56078 (13629)	C	EA	1	*	*	1	1	7	10
P	O	1005-597-5638	HEAD, EJECTOR ROD: 51160 (13629)	B	EA	1	*	*	*	*	7	14
P	O	1005-471-3281	HEAD, EJECTOR ROD: 56165 (13629)	C	EA	1	*	*	*	*	7	14
P	O	1005-600-4669	NUT, GRIP SCREW: 50089 (13629)	B	EA	1	*	*	*	*	7	39
P	O	1005-420-5108	NUT, GRIP SCREW: 56119 (13629)	C	EA	1	*	*	*	*	7	39
P	O	1005-597-3147	PIN, GRIP: 50367 (13629)	B	EA	1	*	*	*	*	7	40
P	O	1005-420-5118	PIN, GRIP: 95135 (13629)	C	EA	1	*	*	*	*	7	40
SMITH AND WESSON, MASTERPIECE K-38, REVOLVER, CALIBER .38, SPECIAL, MODEL 14, 6-INCH BARREL													
P	O	5305-597-3131	SCREW, GRIP: 5488 (55358)	J	EA	1	*	*	*	*	8	1
P	O	1005-869-7971	GRIP, REVOLVER: MAGNA, SQUARE BUTT, LEFT HAND AND RIGHT HAND, WALNUT, W/SCREW 5910301 (19204)	E	PR	1	*	*	*	*	8	2
P	O	1005-830-1629	PIN, GRIP: 5062 (55358)	D	EA	1	*	*	*	*	8	53

Section IV. REPAIR PARTS LIST—Continued

(1) Source maint and recov code			(2) Federal stock No.	(3) Description Reference number & mfr code Usable on code	(4) Unit of meas	(5) Qty inc in unit	(6) 15 day organizational maintenance alw				(7) Illustration	
(a) Source	(b) Maint	(c) Recov					(a) 1-5	(b) 6-20	(c) 21-50	(d) 51-100	(a) Figure No.	(b) Item No.
<p>REPAIR PARTS FOR: SMITH AND WESSON, MILITARY AND POLICE REVOLVER, .38, SPECIAL, MODEL 10, SQUARE BUTT, 4-INCH BARREL, ROUND BUTT 2 AND 4-INCH BARREL</p>												
P	O	5305-597-3131	SCREW, GRIP: SQUARE BUTT 5488 (55358)	J EA	1	*	*	*	*	9	1
P	O	5305-133-5848	SCREW, GRIP: ROUND BUTT 5936 (55358)	N EA	1	*	*	*	*	9	1
P	O	1005-131-6236	GRIP, REVOLVER: MAGNA, ROUND BUTT, LEFT HAND AND RIGHT HAND, WALNUT W/SCREW 5910918 (19204)	N PR	1	*	*	*	*	9	2
P	O	1005-464-1280	GRIP, REVOLVER: MAGNA. SQUARE BUTT, LEFT HAND AND RIGHT HAND, W/SCREW 5910964 (19204)	N PR	1	*	*	*	*	9	2
P	O	1005-830-1629	PIN, GRIP: 5062 (55358)	F D EA	1	*	*	*	*	9	51

Section V. SPECIAL TOOLS, TEST AND SUPPORT EQUIPMENT

(1) Source maint and recov code			(2) Federal stock No.	(3) Description		(4) Unit of meas	(5) Qty inc in unit	(6) 15 day organizational maintenance alw				(7) Illustration	
(a) Source	(b) Maint	(c) Recov		Reference number & mfr code	Usable on code			(a) 1-5	(b) 6-20	(c) 21-50	(d) 51-100	(a) Figure No.	(b) Item No.
TOOLS AND EQUIPMENT													
P	O	1005-556-4102	ROD CLEANING, SMALL ARMS: M4 5564102 (19204)		EA	*	*	*	*		
P	O	1005-716-2132	BRUSH, CLEANING, SMALL ARMS: BORE 7162132 (19204)		EA	*	*	*	*		
P	O	1095-714-2700	HOLSTER, REVOLVER: SHOULDER, 2, 4, and 5-INCH BARREL 7142700 (19204)	R	EA	*	*	*	*	14	
P	O	1095-716-0488	HOLSTER, REVOLVER: HIP, 2-INCH BARREL 7160488 (19204)	B	EA	*	*	*	*	10	
P	O	1095-716-0934	HOLSTER, REVOLVER: SHOULDER, 2-INCH BARREL 7160934 (19204)	P	EA	*	*	*	*	11	
P	O	1095-840-1918	HOLSTER, REVOLVER: SHOULDER, 4-INCH BARREL 8401918 (19204)	L	EA	*	*	*	*	13	
P	O	1095-973-0521	HOLSTER, REVOLVER: HIP, 2 AND 4-INCH BARREL 7791495 (19204)	Q	EA	*	*	*	*	12	

Section VI. REPAIR PARTS LIST

(1) Source maint and recov code			(2) Federal stock No.	(3) Description	(4) Unit of meas	(5) Qty inc in unit	(6) 30-Day DS maint allowance			(7) 30-Day GS maint allowance			(8) 1-Yr alw per 100 equip cntgcy	(9) Depot maint alw per 100 equip	(10) Illustration		
(a) Source	(b) Maint	(c) Recov		Reference Number & Mfr Code	Usable on Code		(a) 1-20	(b) 21-50	(c) 51-100	(a) 1-20	(b) 21-50	(c) 51-100			(a) Fig No.	(b) Item No.	
REPAIR PARTS FOR:																	
COLT DETECTIVE AND POLICE POSITIVE, SPECIAL, REVOLVER CALIBER .38 SPECIAL, 2 AND 4-INCH BARREL																	
P	O	5305-133-5847	SCREW, GRIP: C93116-3 (13629)	B	EA	1	*	*	1	*	*	1	12	7	1
P	O	1005-471-3285	SCREW, GRIP: 93121 (13629)	C	EA	1	*	*	1	*	*	1	12	7	1
P	O	1005-086-8282	GRIP, REVOLVER: LEFT HAND AND RIGHT HAND, WALNUT, W/SCREW 8430243 (13629)	B	PR	1	*	*	1	*	*	1	12	7	2
P	O	1005-471-3284	GRIP, REVOLVER: ROUND BUTT, LEFT HAND AND RIGHT HAND, WALNUT, W/SCREW 5911095 (19204)	C	PR	1	*	*	1	*	*	1	12	7	2
P	O	1005-532-3145	SCREW, SIDE PLATE: 50350 (72165)	B	EA	2	*	1	1	*	1	1	12	7	3
P	O	1005-420-5115	SCREW, SIDE PLATE: 56176 (13629)	C	EA	2	*	1	1	*	1	1	12	7	3
P	H	1005-597-3769	PLATE, SIDE: 50576 (13629)	B	EA	1	*	*	1	12	7	4
P	H	1005-420-5104	PLATE, SIDE: 56102 (13629)	C	EA	1	*	*	1	12	7	4
P	F	1005-523-8075	LATCH: 50403 (72165)	B	EA	1	*	*	1	*	*	1	12	7	5
P	F	1005-420-5093	LATCH: 56087 (13629)	C	EA	1	*	*	1	*	*	1	12	7	5
P	F	1005-523-8088	SPRING, LATCH: 50407 (72165)	B	EA	1	*	*	1	*	*	1	12	7	6
P	F	1005-442-2280	SPRING, LATCH: A56367 (13629)	C	EA	1	*	*	1	*	*	1	12	7	6
P	F	5315-602-1841	PIN, STRAIGHT, HEADED: 50408 (13629)	B	EA	1	*	*	1	*	*	1	12	7	7
P	F	1005-420-5095	GUIDE, LATCH SPRING: 56089 (13629)	C	EA	1	*	*	1	*	*	1	12	7	7
P	O	1005-602-2236	SCREW, CRANE LOCK: 50515 (13629)	B	EA	1	*	*	1	*	*	1	12	7	8
P	O	1005-420-5090	SCREW, CRANE LOCK: 56079 (13629)	C	EA	1	*	*	1	*	*	1	12	7	8
P	O	1005-523-8089	SPRING, CRANE LOCK: 50516 (72165)	A	EA	1	*	*	1	*	*	1	12	7	9
P	O	1005-523-8069	DETENT, CRANE LOCK: 50517 (72165)	B	EA	1	*	1	2	*	1	2	12	7	10

Section VI. REPAIR PARTS LIST—Continued

(1) Source maint and recov code			(2) Federal stock No.	(3) Description	(4) Unit of meas	(5) Qty inc in unit	(6) 30-Day DS maint allowance			(7) 30-Day GS maint allowance			(8) 1-Yr slw per 100 equip cntgy	(9) Depot maint slw per 100 equip	(10) Illustration		
(a) Source	(b) Maint	(c) Recov		Reference Number & Mfr Code	Usable on Code		(a) 1-20	(b) 21-50	(c) 51-100	(a) 1-20	(b) 21-50	(c) 51-100			(a) Fig No.	(b) Item No.	
P	O	1005-420-5089	DETENT, CRANE LOCK: 56078 (13629)	C	EA	1	*	1	2	*	1	2	12	7	10
P	F	1005-597-3718	CYLINDER ASSEMBLY: 50420 (13629)	B	EA	1	*	*	1	*	*	1	12	7	11
P	F	1005-471-3280	CYLINDER: 56147 (13629)	C	EA	1	*	*	1	*	*	1	12	7	11
P	H	1005-597-3145	RATCHET: 50355 (13629)	B	EA	1	*	*	1	12	7	12
P	H	1005-420-5101	RATCHET, EJECTOR: 56095 (13629)	C	EA	1	*	*	1	12	7	12
P	F	1005-597-3146	EJECTOR, CARTRIDGE: 50356 (13629)	B	EA	1	*	*	1	*	*	1	12	7	13
P	F	1005-420-5109	EJECTOR, CARTRIDGE: 56129 (13629)	C	EA	1	*	*	1	*	*	1	12	7	13
P	O	1005-597-5638	HEAD, EJECTOR ROD: 51160 (13629)	B	EA	1	*	*	1	*	*	1	12	7	14
P	O	1005-471-3281	HEAD, EJECTOR ROD: 56165 (13629)	C	EA	1	*	*	1	*	*	1	12	7	14
P	F	1005-523-8086	SPRING, EJECTOR: 50388 (72165)	A	EA	1	*	*	1	*	*	1	12	7	15
P	F	1005-532-3135	BUSHING, CRANE: 50358 (72165)	B	EA	1	*	*	1	*	*	1	12	7	16
P	F	1005-420-5102	BUSHING, CRANE: 56099 (13629)	C	EA	1	*	*	1	*	*	1	12	7	16
P	F	1005-597-4093	CRANE: 51082 (13629)	B	EA	1	*	*	1	*	*	1	12	7	17
P	F	1005-420-5112	CRANE: 56159 (13629)	C	EA	1	*	*	1	*	*	1	12	7	17
P	F	1005-523-8078	MAINSRING: 50360 (72165)	B	EA	1	*	*	1	*	*	1	12	7	18
P	F	1005-420-5096	MAINSRING: 56090 (13629)	C	EA	1	*	*	1	*	*	1	12	7	18
P	F	1005-597-3986	HAND: 50592 (13629)	B	EA	1	*	1	1	*	1	1	12	7	19
P	F	1005-420-5091	HAND, CYLINDER: 56086 (13629)	C	EA	1	*	1	1	*	1	1	12	7	19
P	F	1005-532-3137	PIN, REBOUND LEVER: 50410 (72165)	B	EA	1	*	*	1	*	*	1	12	7	20
P	F	1005-420-5099	PIN, REBOUND LEVER: 56092 (13639)	C	EA	1	*	*	1	*	*	1	12	7	20
P	F	1005-523-8076	LEVER, REBOUND: 50409 (72165)	B	EA	1	*	*	1	*	*	1	12	7	21

Section VI. REPAIR PARTS LIST—Continued

(1) Source maint and recov code			(2) Federal stock No.	(3) Description Reference Number & Mfr Code Usable on Code	(4) Unit of meas	(5) Qty inc in unit	(6) 30-Day DS maint allowance			(7) 30-Day GS maint allowance			(8) 1-Yr alw per 100 equip cntgcy	(9) Depot maint alw per 100 equip	(10) Illustration	
(a) Source	(b) Maint	(c) Recov					(a) 1-20	(b) 21-50	(c) 51-100	(a) 1-20	(b) 21-50	(c) 51-100			(a) Fig No.	(b) Item No.
P	F	1005-420-5097	LEVER, REBOUND: 56091 (13629)	C	1	*	*	1	*	*	1	12	7	21
P	F	1005-523-8072	HAMMER, FIRING, SMALL ARMS: 50394 (72165)	B	1	*	*	1	*	*	1	12	7	22
P	F	1005-471-3279	HAMMER, FIRING, SMALL ARMS: 56082 (13629)	C	1	*	*	1	*	*	1	12	7	22
P	F	1005-597-3611	PIN STRUT: 50398 (13629)	B	1	*	*	1	*	*	1	12	7	23
P	F	1005-420-5107	PIN, HAMMER STRUT AND STIRRUP: 56108 (13629)	C	2	*	*	1	*	*	1	12	7	23
P	F	1005-523-8093	STRUT, HAMMER: 50399 (72165)	C	1	*	*	1	*	*	1	12	7	24
P	F	1005-442-2277	STRUT, HAMMER: 56107 (13629)	C	1	*	*	1	*	*	1	12	7	24
P	F	1005-523-8087	SPRING, HAMMER STRUT: 50400 (72165)	A	1	*	*	1	*	*	1	12	7	25
P	F	1005-532-3139	RIVET, FIRING PIN: 50396 (72165)	B	1	*	*	1	*	*	1	12	7	26
P	F	1005-471-3287	PIN, ROLL: 95136 (13629)	C	1	*	*	1	*	*	1	12	7	26
P	F	1005-523-8079	PIN, FIRING: 50395 (72165)	B	1	*	*	1	*	*	1	12	7	27
P	F	1005-420-5105	PIN, FIRING: 56103 (13629)	C	1	*	*	1	*	*	1	12	7	27
P	F	1005-523-8090	STIRRUP, HAMMER: 50369 (72165)	B	1	*	*	1	*	*	1	12	7	28
P	F	1005-442-2278	STIRRUP, HAMMER: 56105 (13629)	C	1	*	*	1	*	*	1	12	7	28
P	F	1005-523-8094	TRIGGER, ASSEMBLY: 50412 (72165)	B	1	*	*	1	*	*	1	12	7	29
P	F	1005-471-3286	TRIGGER, ASSEMBLY: B56372 (13629)	C	1	*	*	1	*	*	1	12	7	29
P	F	1005-523-8077	LEVER, SAFETY: 50411 (72165)	B	1	*	*	1	*	*	1	12	7	30
P	F	1005-420-5100	LEVER, SAFETY: 56094 (13629)	C	1	*	*	1	*	*	1	12	7	30
P	F	1005-523-8083	SAFETY ASSEMBLY: 50375 (72165)	B	1	*	*	1	*	*	1	12	7	31
P	F	1005-420-5113	SAFETY ASSEMBLY: 56171 (13629)	C	1	*	*	1	*	*	1	12	7	31
P	F	1005-597-3639	PIN, LATCH: 50404 (13629)	B	1	*	*	1	*	*	1	12	7	32

Section VI. REPAIR PARTS LIST—Continued

(1) Source maint and recov code			(2) Federal stock No.	(3) Description	(4) Unit of meas	(5) Qty inc in unit	(6) 30-Day D8 maint allowance			(7) 30-Day G8 maint allowance			(8) 1-Yr aw per 100 equip cntgty	(9) Depot maint aw per 100 equip	(10) Illustration	
(a) Source	(b) Maint	(c) Recov	Reference Number & Mfr Code	Usable on Code			(a)	(b)	(c)	(a)	(b)	(c)			(a) Fig No.	(b) Item No.
							1-20	21-50	51-100	1-20	21-50	51-100				
P	F	1005-420-5094	PIN, LATCH: 56088 (13629)	EA C	1	*	*	1	*	*	1	12	7	32
P	F	1005-532-3140	SCREW, BOLT: 50513 (72165)	EA B	1	*	*	1	*	*	1	12	7	33
P	F	1005-420-5114	SCREW, BOLT: 56173 (13629)	EA C	1	*	*	1	*	*	1	12	7	33
P	F	1005-532-3134	BOLT: 50380 (72165)	EA B	1	*	*	1	*	*	1	12	7	34
P	F	1005-420-5088	BOLT: 56076 (13629)	EA C	1	*	*	1	*	*	1	12	7	34
P	F	1005-523-8084	SPRING, BOLT: 50381 (72165)	EA A	1	*	*	1	*	*	1	12	7	35
P	F	1005-532-3138	PIN, TRIGGER: 50414 (72165)	EA B	1	*	*	1	*	*	1	12	7	36
P	F	1005-471-3276	PIN, TRIGGER: B56357-1 (13629)	EA C	1	*	*	1	*	*	1	12	7	36
P	F	1005-523-0039	PIN, HAMMER: 50401 (72165)	EA B	1	*	*	1	*	*	1	12	7	37
P	F	1005-471-3277	PIN, HAMMER: 52133 (13629)	EA C	1	*	*	1	*	*	1	12	7	37
P	F	1005-597-3276	PLATE, RECOIL: 50392 (13629)	EA B	1	*	*	1	*	*	1	12	7	38
P	F	1005-420-5103	PLATE, RECOIL: 56101 (13629)	EA C	1	*	*	1	*	*	1	12	7	38
P	O	1005-600-4669	NUT, GRIP SCREW: 50089 (13629)	EA B	1	*	*	1	*	*	1	12	7	39
P	O	1005-420-5108	NUT, GRIP SCREW: 56119 (13629)	EA C	1	*	*	1	*	*	1	12	7	39
P	O	1005-597-3147	PIN, GRIP: 50367 (13629)	EA B	1	*	*	1	*	*	1	12	7	40
P	O	1005-420-5118	PIN, GRIP: 95135 (13629)	EA C	1	*	*	1	*	*	1	12	7	40
P	H	1005-597-5840	BARREL: 2-INCH 51177 (13629)	EA B	1	*	*	1	12	7	41
P	H	1005-471-3278	BARREL ASSEMBLY: 4-INCH 56063 (13629)	EA C	1	*	*	1	12	7	41
P	O	5305-597-3131	SMITH AND WESSON, MASTERPIECE K-38, REVOLVER, CALIBER .38. SPECIAL, MODEL 14. 6-INCH BARREL SCREW, GRIP: 5488 (55358)	EA J	1	*	*	1	*	*	1	12	8	1
P	O	1005-869-7971	GRIP, REVOLVER: MAGNA, SQUARE BUTT, LEFT HAND AND RIGHT HAND, WALNUT, W/SCREW 5910301 (19204)	PR E	1	*	*	1	*	*	1	12	8	2

TM 9-1005-206-14P/1

Section VI. REPAIR PARTS LIST—Continued

(1) Source maint and recov code			(2) Federal stock No.	(3) Description Reference Number & Mfr Code	(4) Unit of meas	(5) Qty inc in unit	(6) 30-Day DS maint allowance			(7) 30-Day GS maint allowance			(8) 1-Yr slw per 100 equip cntgy	(9) Depot maint slw per 100 equip	(10) Illustration	
(a) Source	(b) Maint	(c) Recov					(a) 1-20	(b) 21-50	(c) 51-100	(a) 1-20	(b) 21-50	(c) 51-100			(a) Fig No.	(b) Item No.
P	F	1005-658-6225	SCREW, PLATE, CROWNED: 5049 (55358)	EA	2	*	1	2	*	1	2	12	8	3
P	F	1005-622-1102	SCREW, SIDE PLATE: 5091 (55358)	EA	1	*	1	1	*	1	1	12	8	4
P	H	1005-368-9680	PLATE, SIDE: 5129 (55358)	EA	1	*	*	1	12	8	5
P	F	1005-830-2505	BLOCK, HAMMER: 5084 (55358)	EA	1	*	1	1	*	1	1	12	8	6
P	F	1005-906-6673	ROD, EXTRACTOR: FOR REVOLVERS W/BBLs OVER 2-INCH 5455 (55358)	EA	1	*	1	1	*	1	1	12	8	7
P	F	1005-830-1616	YOKE: 5023 (55358)	EA	1	*	1	1	*	1	1	12	8	8
P	F	1005-830-1606	PIN, CENTER: FOR REVOLVERS WITH BARRELS OVER 2-INCHES 5006 (55358)	EA	1	*	1	1	*	1	1	12	8	9
P	F	1005-715-7493	SPRING, CENTER PIN: 5458 (55358)	EA	1	*	1	1	*	1	1	12	8	10
P	F	1005-830-2534	COLLAR, EXTRACTOR ROD: 5629 (55358)	EA	1	*	1	1	*	1	1	12	8	11
P	F	1005-830-1615	SPRING, EXTRACTOR: 5022 (55358)	EA	1	*	*	1	*	*	1	12	8	12
P	F	1005-830-1617	RING, GAS: 5030 (55358)	EA	1	*	1	1	*	1	1	12	8	13
P	F	1005-715-7495	CYLINDER, WITH EXTRACTOR: 5086 (55358)	EA	1	*	*	1	*	*	1	12	8	14
P	F	1005-830-1609	PIN, EXTRACTOR: 5014 (55358)	EA	2	*	1	1	*	1	1	12	8	15
P	F	1005-715-7494	EXTRACTOR: 5435 (55358)	EA	1	*	1	1	*	1	1	12	8	16
P	F	1005-830-1631	SCREW, STRAIN: SQUARE BUTT 5064 (55358)	EA	1	*	*	1	*	*	1	12	8	17
P	F	1005-830-1625	MAINSRING: 5047 (55358)	EA	1	*	*	1	*	*	1	12	8	18
P	F	1005-830-2506	SLIDE, REBOUND: 5085 (55358)	EA	1	*	*	1	*	*	1	12	8	19
P	F	1005-658-6224	SPRING, REBOUND SLIDE: 5074 (55358)	EA	1	*	1	1	*	1	1	12	8	20
P	F	1005-830-2504	PIN, REBOUND SLIDE: 5083 (55358)	EA	1	*	1	1	*	1	1	12	8	21
P	F	1005-597-3109	PIN, HAND, SPRING: 5053 (55358)	EA	5	*	1	1	*	1	1	12	8	22
P	F	1005-830-1628	STIRRUP: 5055 (55358)	EA	1	*	1	1	*	1	1	12	8	23

Section VI. REPAIR PARTS LIST—Continued

(1) Source maint and recov code			(2) Federal stock No.	(3) Description	(4) Unit of meas	(5) Qty inc in unit	(6) 30-Day DS maint allowance			(7) 30-Day GS maint allowance			(8) 1-Yr alw per 100 equip cntgcy	(9) Depot maint alw per 100 equip	(10) Illustration		
(a) Source	(b) Maint	(c) Recov		Reference Number & Mfr Code	Usable on Code		(a) 1-20	(b) 21-50	(c) 51-100	(a) 1-20	(b) 21-50	(c) 51-100			(a) Fig No.	(b) Item No.	
P	F	1005-368-9682	SEAR: 5113 (55358)	D	EA	1	*	1	1	*	1	1	12	8	24
P	F	1005-726-6213	SPRING, SEAR: 5054 (55358)	D	EA	1	*	1	1	*	1	1	12	8	25
P	F	1005-830-1618	RIVET, HAMMER NOSE: 5034 (55358)	D	EA	1	*	1	1	*	1	1	12	8	26
P	F	1005-368-9693	NOSE, HAMMER: 5133 (55358)	D	EA	1	*	1	1	*	1	1	12	8	27
P	F	1005-803-2509	HAMMER: 5093 (55358)	E	EA	1	*	*	1	*	*	1	12	8	28
P	F	1005-704-8513	HAND TRIGGER: 5076 (55358)	D	EA	1	*	1	1	*	1	1	12	8	29
P	F	1005-830-1620	PIN, HAND: 5042 (55358)	D	EA	1	*	1	1	*	1	1	12	8	30
P	F	1005-830-2500	LEVER, TRIGGER: 5073 (55358)	D	EA	1	*	1	1	*	1	1	12	8	31
P	F	1005-368-9683	SPRING, HAND: TORSION 5118 (55358)	D	EA	1	*	1	1	*	1	1	12	8	32
P	F	1005-368-9686	TRIGGER: 5072 (55358)	D	EA	1	*	1	1	*	1	1	12	8	33
P	F	1005-830-1610	STOP, CYLINDER: 5357 (55358)	D	EA	1	*	1	1	*	1	1	12	8	34
P	F	1005-997-7855	SPRING, CYLINDER STOP: REVOLVER CALIBER .38 SMITH AND WESSON, MODEL 14, K-38, 6-INCH BARREL, SQUARE BUTT 5959 (55358)	D	EA	1	*	1	1	*	1	1	12	8	35
P	F	1005-830-2498	NUT, THUMBPIECE: 5071 (55358)	D	EA	1	*	1	1	*	1	1	12	8	36
P	F	1005-012-2931	THUMBPIECE: 5585 (55358)	D	EA	1	*	1	1	*	1	1	12	8	37
P	F	1005-830-1604	PLUNGER, BOLT: 5004 (55358)	D	EA	1	*	1	1	*	1	1	12	8	38
P	F	1005-830-1605	SPRING, BOLT PLUNGER: 5005 (55358)	D	EA	1	*	1	1	*	1	1	12	8	39
P	F	1005-012-2929	BOLT: 5583 (55358)	D	EA	1	*	*	1	*	*	1	12	8	40
P	F	1005-830-1622	PIN, LOCKING BOLT: 5044 (55358)	D	EA	1	*	1	1	*	1	1	12	8	41
P	F	1005-830-1621	BOLT, LOCKING: FOR REVOLVERS W/BARRELS OVER 2-INCH 5043 (55358)	K	EA	1	*	1	1	*	1	1	12	8	42
P	F	1005-830-1623	SPRING, LOCKING BOLT: 5045 (55358)	D	EA	1	*	1	1	*	1	1	12	8	43

Section VI. REPAIR PARTS LIST—Continued

(1) Source maint and recov code			(2) Federal stock No.	(3) Description Reference Number & Mfr Code Usable on Code	(4) Unit of meas	(5) Qty inc in unit	(6) 30-Day DS maint allowance			(7) 30-Day GS maint allowance			(8) 1-Yr alw per 100 equip cntgcy	(9) Depot maint alw per 100 equip	(10) Illustration	
(a) Source	(b) Maint	(c) Recov					(a) 1-20	(b) 21-50	(c) 51-100	(a) 1-20	(b) 21-50	(c) 51-100			(a) Fig No.	(b) Item No.
P	F	1005-830-1603	PIN, BARREL: 5002 (55358)	D	1	*	1	1	*	1	1	12	8	44
P	H	1005-830-2510	BARREL, 6-INCH: 5098 (55358)	E	1	*	*	1	12	8	45
P	F	1005-830-1619	BUSHING, HAMMER NOSE: 5036 (55358)	D	1	*	1	1	*	1	1	12	8	46
P	F	1005-830-1624	LUG, FRAME: 5046 (55358)	D	1	*	*	1	*	*	1	12	8	47
P	F	1005-830-2519	STUD, HAMMER: 5112 (55358)	D	1	*	1	1	*	1	1	12	8	48
P	F	1005-597-3122	STUD, REBOUND SLIDE: AND CYLINDER STOP 5079 (55358)	D	2	*	1	1	*	1	1	12	8	49
P	F	1005-830-2503	STUD, TRIGGER: 5078 (55358)	D	1	*	1	1	*	1	1	12	8	50
P	F	1005-715-7499	SCREW, STOP, TRIGGER: AND REAR SIGHT LEAF 5155 (55358)	E	1	*	*	1	*	*	1	12	8	51
P	F	1005-830-2521	STOP, TRIGGER: 5114 (55358)	E	1	*	*	1	*	*	1	12	8	52
P	O	1005-830-1629	PIN, GRIP: 5062 (55358)	D	1	*	*	1	*	*	1	12	8	53
P	F	1005-830-2526	ESCUTCHEON: 5191 (55358)	D	1	*	1	1	*	1	1	12	8	54
P	F	1005-830-2527	NUT, ESCUTCHEON: 5192 (55358)	D	1	*	1	1	*	1	1	12	8	55
P	F	1005-715-7499	SCREW, STOP, TRIGGER: AND REAR SIGHT LEAF 5155 (55358)	E	1	REF	REF	REF	REF	REF	REF	REF	8	56
P	F	1005-830-2512	LEAF, REAR SIGHT: 5101 (55358)	E	1	*	*	1	*	*	1	12	8	57
P	F	1005-830-2513	NUT, ELEVATING, REAR SIGHT: 5102 (55358)	E	1	*	*	1	*	*	1	12	8	58
P	F	1005-712-9035	PLUNGER, REAR SIGHT: 5104 (55358)	E	1	*	1	1	*	1	1	12	8	59
P	F	1005-712-8985	SPRING, PLUNGER, REAR SIGHT: 5103 (55358)	E	1	*	1	1	*	1	1	12	8	60
P	F	1005-830-2515	STUD, ELEVATING, REAR: REAR SIGHT 5106 (55358)	E	1	*	*	1	*	*	1	12	8	61
P	F	1005-830-2514	CLIP, SPRING, REAR SIGHT: 5105 (55358)	E	1	*	1	1	*	1	1	12	8	62
P	F	1005-830-2517	SCREW, REAR SIGHT WINDAGE: 5108 (55358)	E	1	*	*	1	*	*	1	12	8	63

Section VI. REPAIR PARTS LIST—Continued

(1) Source maint and recov code			(2) Federal stock No.	(3) Description	(4) Unit of meas	(5) Qty inc in unit	(6) 30-Day DS maint allowance			(7) 30-Day GS maint allowance			(8) 1-Yr alw per 100 equip entgey	(9) Depot maint alw per 100 equip	(10) Illustration	
(a) Source	(b) Maint	(c) Recov		Reference Number & Mfr Code	Usable on Code		(a) 1-20	(b) 21-50	(c) 51-100	(a) 1-20	(b) 21-50	(c) 51-100			(a) Fig No.	(b) Item No.
P	F	1005-712-9035	PLUNGER, REAR SIGHT: 5104 (55358)	E	EA	1	REF	REF	REF	REF	REF	REF	REF	8	64
P	F	1005-712-8985	SPRING, PLUNGER, REAR SIGHT: 5103 (55358)	E	EA	1	REF	REF	REF	REF	REF	REF	REF	8	65
P	F	1005-830-2516	NUT, WINDAGE, REAR SIGHT: 5107 (55358)	E	EA	1	*	*	1	*	*	1	12	8	66
P	F	1005-830-2518	SLIDE, REAR SIGHT: 5109 (55358)	E	EA	1	*	*	1	*	*	1	12	8	67
				SMITH AND WESSON MILITARY AND POLICE REVOLVER, CALIBER .38 SPECIAL, MODEL 10, SQUARE BUTT 4-INCH BARREL, ROUND BUTT 2 AND 4-INCH BARREL												
P	O	5305-597-3131	SCREW, GRIP: SQUARE BUTT 5488 (55358)	J	EA	1	REF	REF	REF	REF	REF	REF	REF	9	1
P	O	5305-133-5848	SCREW, GRIP: ROUND BUTT 5936 (55358)	N	EA	1	*	*	1	*	*	1	12	9	1
P	O	1005-131-6236	GRIP, REVOLVER: MAGNA, ROUND BUTT, LEFT HAND AND RIGHT HAND, WALNUT, W/SCREW 5910918 (19204)	N	PR	1	*	*	1	*	*	1	12	9	2
P	O	1005-464-1280	GRIP, REVOLVER: MAGNA, SQUARE BUTT, LEFT HAND AND RIGHT HAND, W/SCREW 5910964 (19204)	F	PR	1	*	*	1	*	*	1	12	9	2
P	F	1005-658-6225	SCREW, PLATE, CROWNED: 5049 (55358)	D	EA	2	REF	REF	REF	REF	REF	REF	REF	9	3
P	F	1005-622-1102	SCREW, SIDE PLATE: 5091 (55358)	D	EA	1	REF	REF	REF	REF	REF	REF	REF	9	4
P	H	1005-368-9680	PLATE, SIDE: 5129 (55358)	D	EA	1	REF	REF	REF	REF	9	5
P	F	1005-830-2505	BLOCK, HAMMER: 5084 (55358)	D	EA	1	REF	REF	REF	REF	REF	REF	REF	9	6
I	F	1005-464-1279	ROD, EXTRACTOR: FOR REVOLVERS W/2-INCH BARRELS 5454 (55358)	G	EA	1	REF	REF	REF	REF	REF	REF	REF	9	7
P	F	1005-906-6673	ROD, EXTRACTOR: FOR REVOLVERS W/BARRELS OVER 2-INCHES 5455 (55358)	K	EA	1	REF	REF	REF	REF	REF	REF	REF	9	7
P	F	1005-830-1616	YOKE: 5023 (55358)	D	EA	1	REF	REF	REF	REF	REF	REF	REF	9	8
P	F	1005-597-3125	PIN, CENTER: FOR REVOLVERS WITH 2-INCH BARRELS 5082 (55358)	G	EA	1	REF	REF	REF	REF	REF	REF	REF	9	9
P	F	1005-830-1606	PIN, CENTER: FOR REVOLVERS W/BARRELS OVER 2-INCHES 5006 (55358)	K	EA	1	REF	REF	REF	REF	REF	REF	REF	9	9

Section VI. REPAIR PARTS LIST—Continued

(1) Source maint and recov code			(2) Federal stock No.	(3) Description Reference Number & Mfr Code	(4) Unit of meas	(5) Qty inc in unit	(6) 30-Day DS maint allowance			(7) 30-Day GS maint allowance			(8) 1-Yr alw per 100 equip cntgcy	(9) Depot maint alw per 100 equip	(10) Illustration	
(a) Source	(b) Maint	(c) Recov					(a) 1-20	(b) 21-50	(c) 51-100	(a) 1-20	(b) 21-50	(c) 51-100			(a) Fig No.	(b) Item No.
P	F	1005-715-7493	SPRING, CENTER PIN: 5458 (55358)	EA	1	REF	REF	REF	REF	REF	REF	REF	9	10
P	F	1005-830-2534	COLLAR, EXTRACTOR ROD: 5629 (55358)	EA	1	REF	REF	REF	REF	REF	REF	REF	9	11
P	F	1005-830-1615	SPRING, EXTRACTOR: 5022 (55358)	EA	1	REF	REF	REF	REF	REF	REF	REF	9	12
P	F	1005-830-1617	RING, GAS: 5030 (55359)	EA	1	REF	REF	REF	REF	REF	REF	REF	9	13
P	F	1005-715-7495	CYLINDER WITH EXTRACTOR: 5086 (55358)	EA	1	REF	REF	REF	REF	REF	REF	REF	9	14
P	F	1005-830-1609	PIN, EXTRACTOR: 5014 (55358)	EA	2	REF	REF	REF	REF	REF	REF	REF	9	15
P	F	1005-715-7494	EXTRACTOR: 5435 (55358)	EA	1	REF	REF	REF	REF	REF	REF	REF	9	16
P	F	1005-830-1631	SCREW, STRAIN: SQUARE BUTT 5064 (55358)	EA	1	REF	REF	REF	REF	REF	REF	REF	9	17
P	F	1005-597-3104	SCREW, STRAIN: ROUND BUTT 5035 (55358)	EA	1	*	*	1	*	*	1	12	9	17
P	F	1005-830-1625	MAINSRING: 5047 (55358)	EA	1	REF	REF	REF	REF	REF	REF	REF	9	18
P	F	1005-830-2506	SLIDE, REBOUND: 5085 (55358)	EA	1	REF	REF	REF	REF	REF	REF	REF	9	19
P	F	1005-658-6224	SPRING, REBOUND SLIDE: 5074 (55358)	EA	1	REF	REF	REF	REF	REF	REF	REF	9	20
P	F	1005-830-2504	PIN, REBOUND SLIDE: 5083 (55358)	EA	1	REF	REF	REF	REF	REF	REF	REF	9	21
P	F	1005-597-3109	PIN, HAND, SPRING: 5053 (55358)	EA	5	REF	REF	REF	REF	REF	REF	REF	9	22
P	F	1005-830-1628	STIRRUP: 5055 (55358)	EA	1	REF	REF	REF	REF	REF	REF	REF	9	23
P	F	1005-368-9682	SEAR: 5113 (55358)	EA	1	REF	REF	REF	REF	REF	REF	REF	9	24
P	F	1005-726-6213	SPRING SEAR: 5054 (55358)	EA	1	REF	REF	REF	REF	REF	REF	REF	9	25
P	F	1005-830-1618	RIVET, HAMMER NOSE: 5034 (55358)	EA	1	REF	REF	REF	REF	REF	REF	REF	9	26
P	F	1005-368-9693	NOSE, HAMMER: 5133 (55358)	EA	1	REF	REF	REF	REF	REF	REF	REF	9	27
P	F	1005-597-3106	HAMMER: 5051 (55358)	EA	1	*	*	1	*	*	1	12	9	28

Section VI. REPAIR PARTS LIST—Continued

(1) Source maint and recov code			(2) Federal stock No.	(3) Description	(4) Unit of meas	(5) Qty inc in unit	(6) 30-Day DS maint allowance			(7) 30-Day GS maint allowance			(8) 1-Yr alw per 100 equip cntgty	(9) Depot maint alw per 100 equip	(10) Illustration	
(a) Source	(b) Maint	(c) Recov		Reference Number & Mfr Code	Usable on Code		(a) 1-20	(b) 21-50	(c) 51-100	(a) 1-20	(b) 21-50	(c) 51-100			(a) Fig No.	(b) Item No.
P	F	1005-704-8513	HAND, TRIGGER: 5076 (55358)	D	EA	1	REF	REF	REF	REF	REF	REF	REF	9	29
P	F	1005-368-9683	SPRING, HAND: TORSION 5118 (55358)	D	EA	1	REF	REF	REF	REF	REF	REF	REF	9	30
P	F	1005-830-1620	PIN, HAND: 5042 (55358)	D	EA	1	REF	REF	REF	REF	REF	REF	REF	9	31
P	F	1005-830-2500	LEVER, TRIGGER: 5073 (55358)	D	EA	1	REF	REF	REF	REF	REF	REF	REF	9	32
P	F	1005-368-9686	TRIGGER: 5072 (55358)	D	EA	1	REF	REF	REF	REF	REF	REF	REF	9	33
P	F	1005-830-1610	STOP, CYLINDER: 5357 (55358)	D	EA	1	REF	REF	REF	REF	REF	REF	REF	9	34
P	F	1005-997-7855	SPRING, CYLINDER STOP: REVOLVER, CAL. .38, SPECIAL, SMITH AND WESSON 5959 (55358)	D	EA	1	REF	REF	REF	REF	REF	REF	REF	9	35
P	F	1005-830-2498	NUT, THUMBPIECE: 5071 (55358)	D	EA	1	REF	REF	REF	REF	REF	REF	REF	9	36
P	F	1005-012-2931	THUMBPIECE: 5585 (55358)	D	EA	1	REF	REF	REF	REF	REF	REF	REF	9	37
P	F	1005-830-1604	PLUNGER, BOLT: 5004 (55358)	D	EA	1	REF	REF	REF	REF	REF	REF	REF	9	38
P	F	1005-830-1605	SPRING, BOLT PLUNGER: 5005 (55358)	D	EA	1	REF	REF	REF	REF	REF	REF	REF	9	39
P	F	1005-012-2929	BOLT: 5583 (55358)	D	EA	1	REF	REF	REF	REF	REF	REF	REF	9	40
P	F	1005-830-1622	PIN, LOCKING BOLT: 5044 (55358)	D	EA	1	REF	REF	REF	REF	REF	REF	REF	9	41
P	F	1005-726-6083	BOLT, LOCKING: FOR REVOLVERS WITH 2-INCH BARRELS 5147 (55358)	G	EA	1	*	1	1	*	1	1	12	9	42
P	F	1005-830-1621	BOLT, LOCKING: FOR REVOLVERS W/BARRELS OVER 2-INCH 5043 (55358)	K	EA	1	REF	REF	REF	REF	REF	REF	REF	9	42
P	F	1005-830-1623	SPRING, LOCKING BOLT: 5045 (55358)	D	EA	1	REF	REF	REF	REF	REF	REF	REF	9	43
P	F	1005-830-1603	PIN, BARREL: 5002 (55358)	D	EA	1	REF	REF	REF	REF	REF	REF	REF	9	44
P	H	1005-471-3282	BARREL, REVOLVER: 2-INCH 5683 (55358)	G	EA	1	*	*	1	12	9	45
P	H	1005-471-3283	BARREL, REVOLVER: 4-INCH 5685 (55358)	L	EA	1	*	*	1	12	9	45

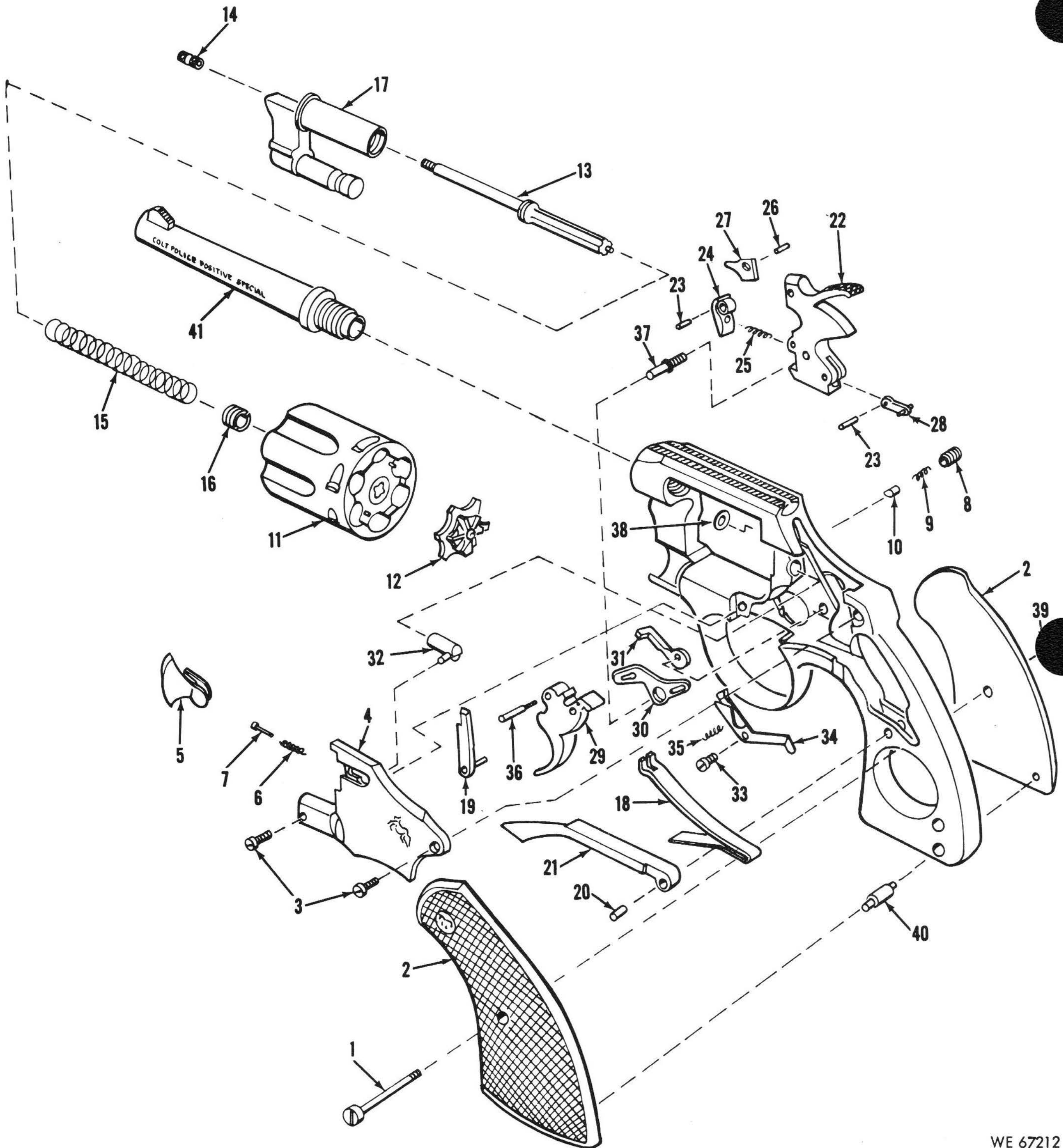
TM 9-1005-206-14P/1

Section VI. REPAIR PARTS LIST

(1) Source maint and recov code			(2) Federal stock No.	(3) Description Reference Number & Mfr Code	(4) Unit of meas	(5) Qty inc in unit	(6) 30-Day DS maint allowance			(7) 30-Day GS maint allowance			(8) 1-Yr alw per 100 equip cntgey	(9) Depot maint alw per 100 equip	(10) Illustration	
(a) Source	(b) Maint	(c) Recov					(a) 1-20	(b) 21-50	(c) 51-100	(a) 1-20	(b) 21-50	(c) 51-100			(a) Fig No.	(b) Item No.
P	F	1005-830-1619	BUSHING, HAMMER NOSE: 5036 (55358)	D	1	REF	REF	REF	REF	REF	REF	REF	9	46
P	F	1005-830-1624	LUG, FRAME: 5046 (55358)	D	1	REF	REF	REF	REF	REF	REF	REF	9	47
P	F	1005-830-2519	STUD, HAMMER: 5112 (55358)	D	1	REF	REF	REF	REF	REF	REF	REF	9	48
P	F	1005-597-3122	STUD, REBOUND SLIDE: AND CYLINDER STOP 5079 (55358)	D	2	REF	REF	REF	REF	REF	REF	REF	9	49
P	F	1005-830-2503	STUD, TRIGGER: 5078 (55358)	D	1	REF	REF	REF	REF	REF	REF	REF	9	50
P	O	1005-830-1629	PIN, GRIP: 5062 (55358)	D	1	REF	REF	REF	REF	REF	REF	REF	9	51
P	F	1005-830-2527	NUT, ESCUTCHEON: 5192 (55358)	D	1	REF	REF	REF	REF	REF	REF	REF	9	52
P	F	1005-830-2526	ESCUTCHEON: 5191 (55358)	D	1	REF	REF	REF	REF	REF	REF	REF	9	53

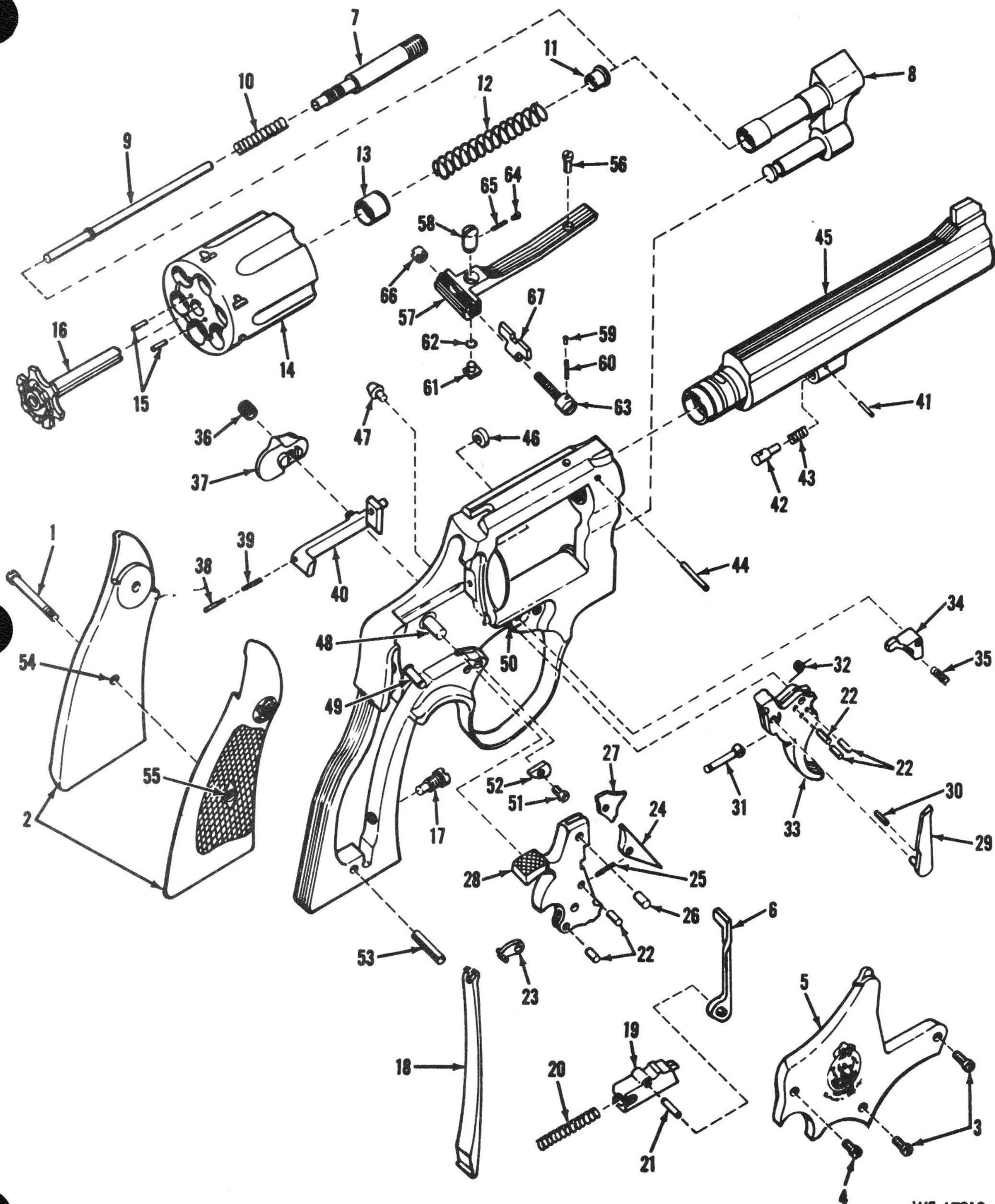
Section VII. SPECIAL TOOLS, TEST AND SUPPORT EQUIPMENT

(1) Source maint and recov code			(2) Federal stock No.	(3) Description	(4) Unit of meas	(5) Qty inc in unit	(6) 30-Day DS maint allowance			(7) 30-Day GS maint allowance			(8) 1-Yr alw per 100 equip entgcy	(9) Depot maint alw per 100 equip	(10) Illustration'	
(a) Source	(b) Maint	(c) Recov	Reference Number & Mfr Code	Usable on Code			(a)	(b)	(c)	(a)	(b)	(c)			(a)	(b)
							1-20	21-50	51-100	1-20	21-50	51-100			Fig No.	Item No.
TOOLS AND EQUIPMENT AUTHORIZED FOR UNIT REPLACEMENT																
P	O	1005-556-4102	ROD, CLEANING, SMALL ARMS: M4 5564102 (19204)	EA	*	*	*	*	*	*	12			
P	O	1005-716-2132	BRUSH, CLEANING, SMALL ARMS: BORE 7162132 (19204)	EA	*	*	*	*	*	*	12			
P	O	1095-714-2700	HOLSTER, REVOLVER: SHOULDER, 2, 4, AND 5-INCH BARREL 7142700 (19204)	EA	*	*	*	*	*	*	12	14	
P	O	1095-716-0488	HOLSTER, REVOLVER: HIP, 2-INCH BARREL 7160488 (19204)	EA	*	*	*	*	*	*	12	10	
P	O	1095-716-0934	HOLSTER, REVOLVER: SHOULDER, 2-INCH BARREL 7160934 (19204)	EA	*	*	*	*	*	*	12	11	
P	O	1095-840-1918	HOLSTER, REVOLVER: SHOULDER, 4-INCH BARREL 8401918 (19204)	EA	*	*	*	*	*	*	12	13	
P	O	1095-973-0521	HOLSTER, REVOLVER: HIP, 2 AND 4-INCH BARREL 7791495 (19204)	EA	*	*	*	*	*	*	12	12	



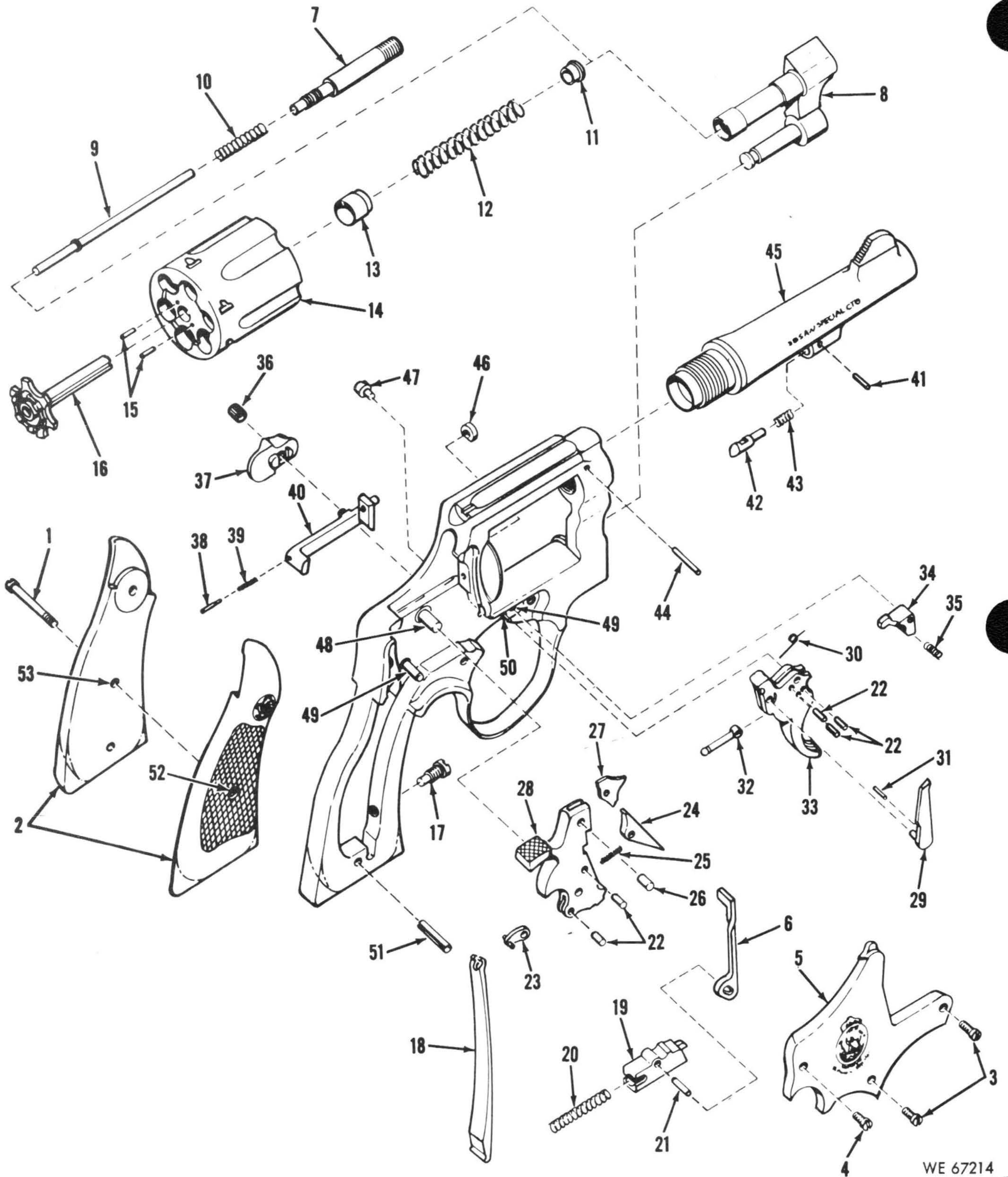
WE 67212

Figure 7. Caliber .38 special, Colt detective special and police positive revolver, 2-inch and 4-inch barrel—exploded view.



WE 67213

Figure 8. Caliber .38 special. Smith and Wesson K-38 masterpiece revolver, model 14, 6-inch barrel—exploded view.



WE 67214

Figure 9. Caliber .38 special. Smith and Wesson military and police revolver. model 10, square butt, 4-inch barrel—round butt, 2 and 4-inch barrel—exploded view.

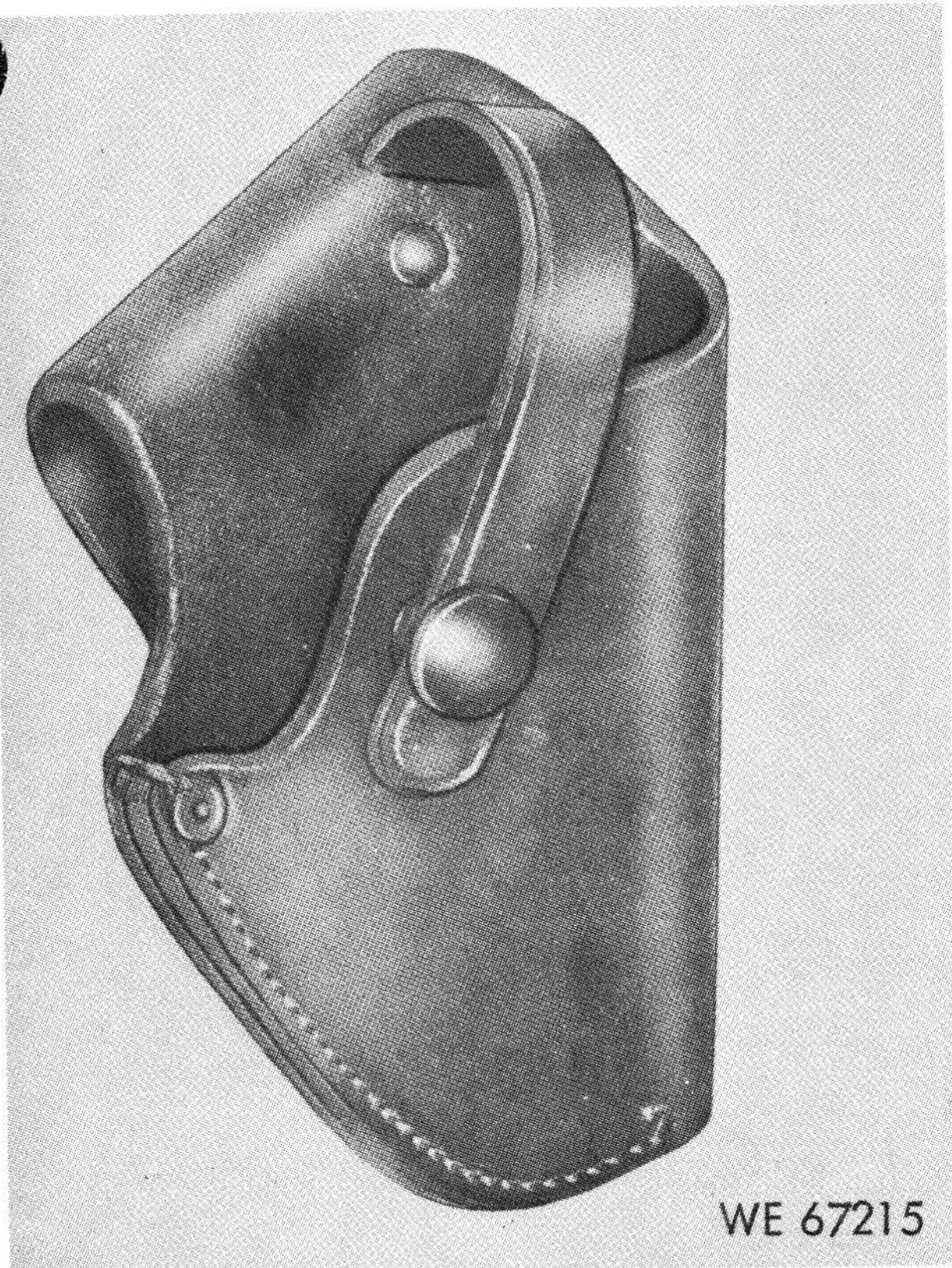


Figure 10. Hip holster for revolver, 2-inch barrel.

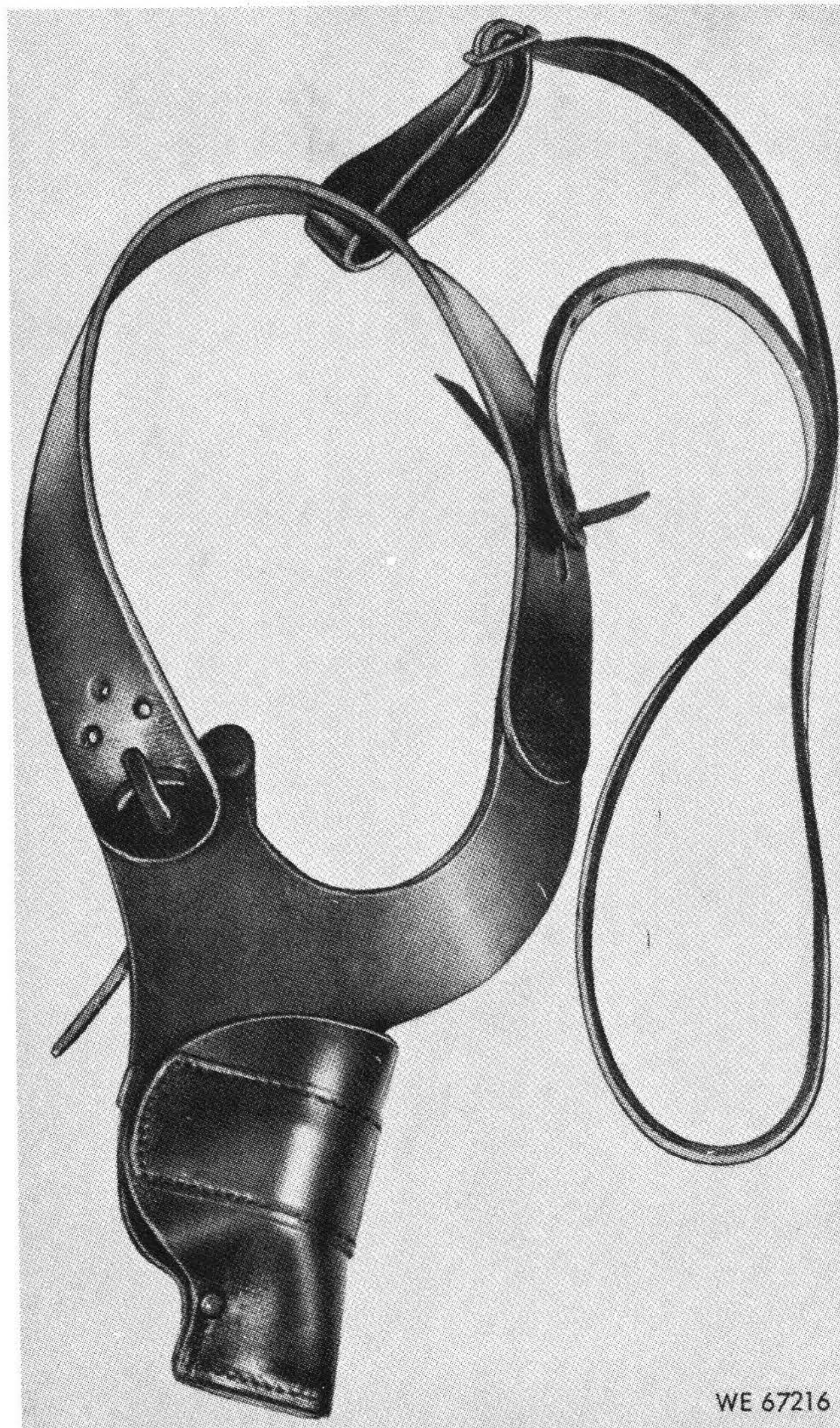


Figure 11. Shoulder holster for revolver, 2-inch barrel.

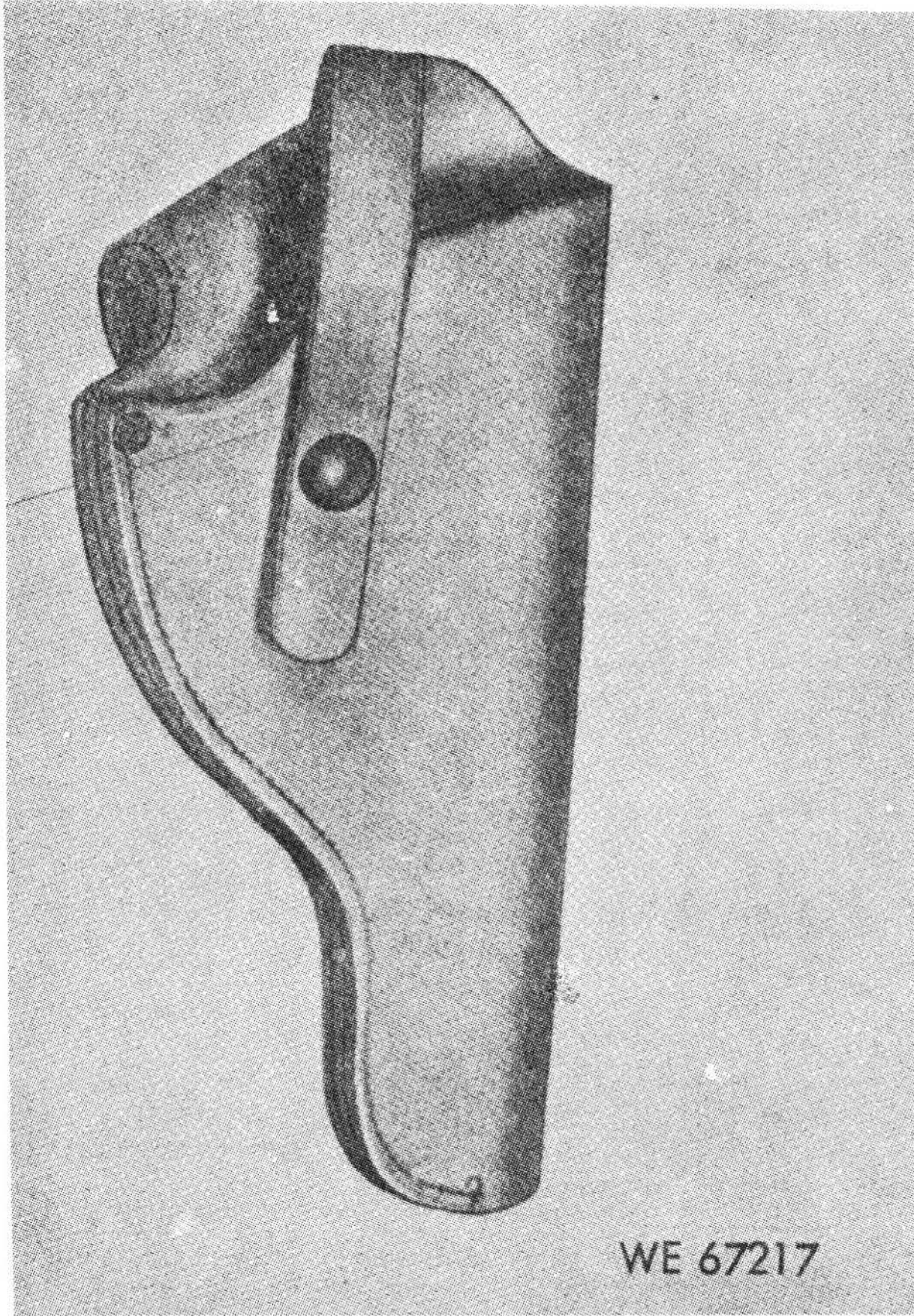


Figure 12. Hip holster for revolver, 2 and 4-inch barrel.

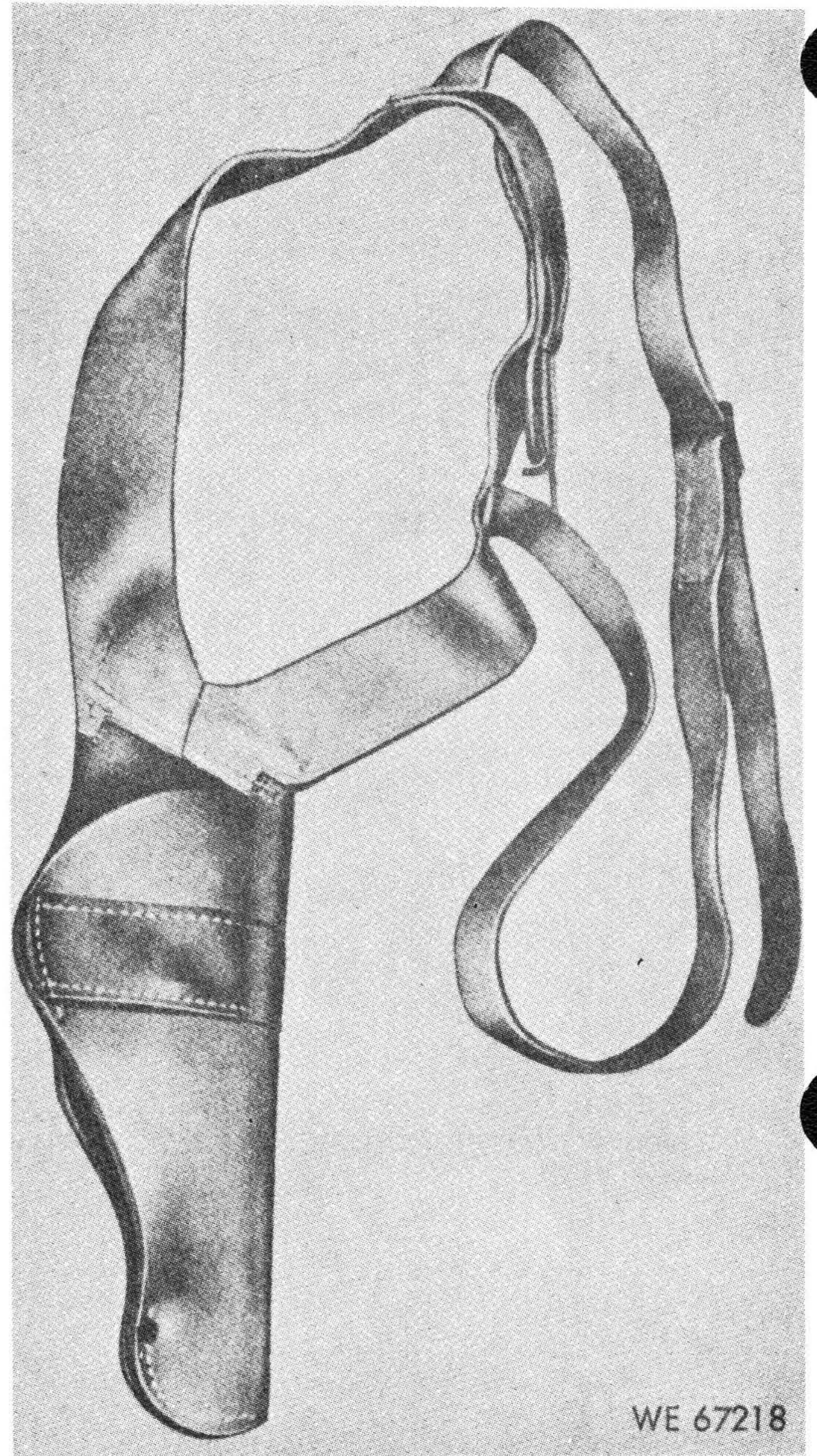


Figure 13. Shoulder holster for revolver, 4-inch barrel.

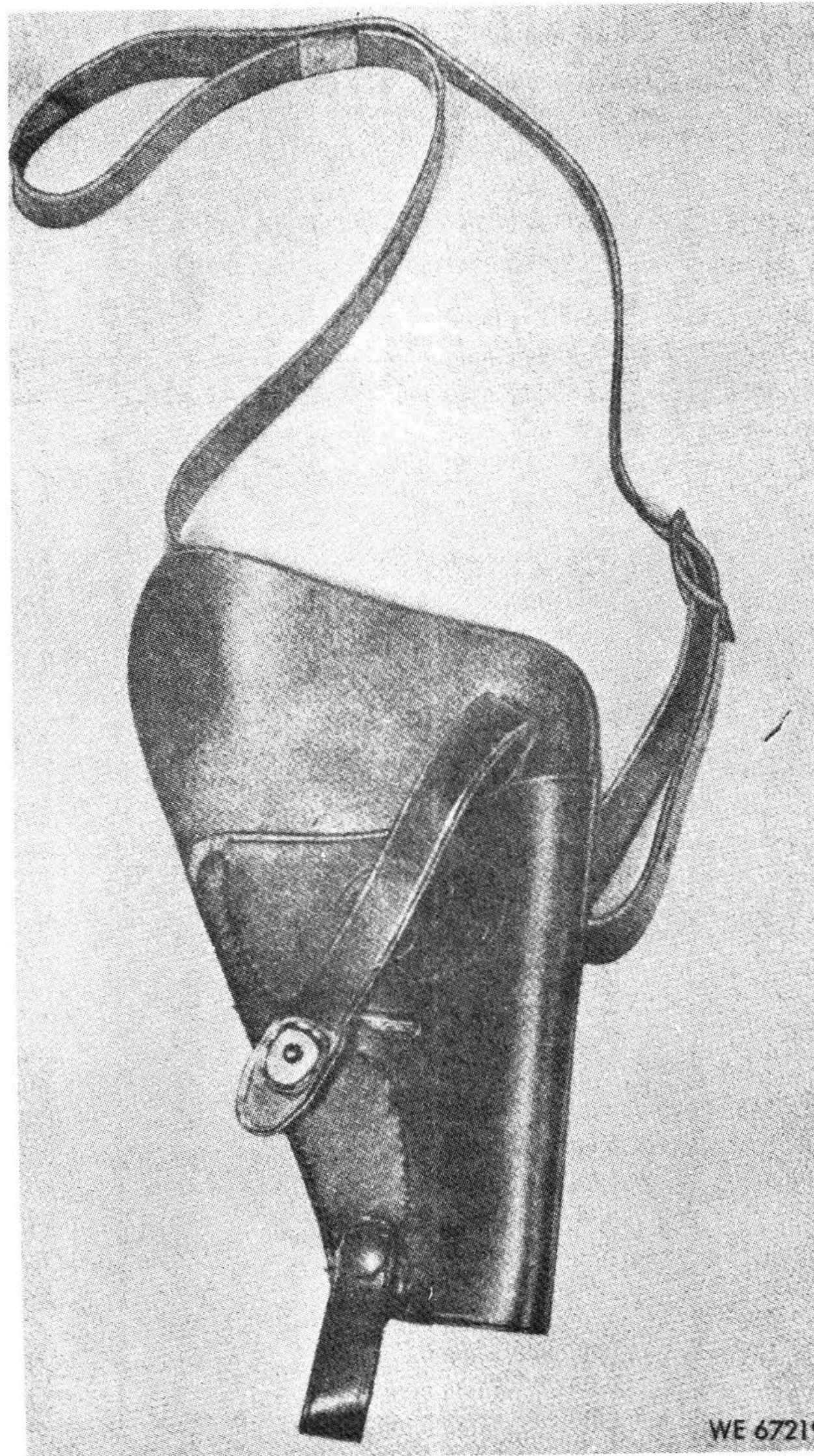


Figure 14. Shoulder holster for revolver, 2, 4, and 5-inch barrel.

Section VIII. INDEX—FEDERAL STOCK NUMBER AND REFERENCE NUMBER CROSS-REFERENCE TO FIGURE AND ITEM NUMBER

<i>Stock Number</i>	<i>Figure No.</i>	<i>Item No.</i>	<i>Stock Number</i>	<i>Figure No.</i>	<i>Item No.</i>	<i>Stock Number</i>	<i>Figure No.</i>	<i>Item No.</i>
1005-012-2929	8	40	1005-523-8075	7	5	1005-715-7499	8	51
	9	40	1005-523-8076	7	21		8	56
1005-012-2931	8	37	1005-523-8077	7	30	1005-726-6083	9	42
	9	37	1005-523-8078	7	18	1005-726-6213	8	25
1005-086-8282	7	2	1005-523-8079	7	27		9	25
1005-131-6236	9	2	1005-523-8083	7	31	1005-803-2509	8	28
1005-368-9680	8	5	1005-523-8084	7	35	1005-830-1603	8	44
	9	5	1005-523-8086	7	15		9	44
1005-368-9682	8	24	1005-523-8087	7	25	1005-830-1604	8	38
	9	24	1005-523-8088	7	6		9	38
1005-368-9683	8	32	1005-523-8089	7	9	1005-830-1605	8	39
	9	30	1005-523-8090	7	28		9	39
1005-368-9686	8	33	1005-523-8093	7	24	1005-830-1606	8	9
	9	33	1005-523-8094	7	29		9	9
1005-368-9693	8	27	1005-532-3134	7	34	1005-830-1609	8	15
	9	27	1005-532-3135	7	16		9	15
1005-420-5088	7	34	1005-532-3137	7	20	1005-830-1610	8	34
1005-420-5089	7	10	1005-532-3138	7	36		9	34
1005-420-5090	7	8	1005-532-3139	7	26	1005-830-1615	8	12
1005-420-5091	7	19	1005-532-3140	7	33		9	12
1005-420-5093	7	5	1005-532-3145	7	3	1005-830-1616	8	8
1005-420-5094	7	32	1005-597-3104	9	17		9	8
1005-420-5095	7	7	1005-597-3106	9	28	1005-830-1617	8	13
1005-420-5096	7	18	1005-597-3109	8	22		9	13
1005-420-5097	7	21		9	22	1005-830-1618	8	26
1005-420-5099	7	20	1005-597-3122	8	49		9	26
1005-420-5100	7	30		9	49	1005-830-1619	8	46
1005-420-5101	7	12	1005-597-3125	9	9		9	46
1005-420-5102	7	16	1005-597-3145	7	12	1005-830-1620	8	30
1005-420-5103	7	38	1005-597-3146	7	13		9	31
1005-420-5104	7	4	1005-597-3147	7	40	1005-830-1621	8	42
1005-420-5105	7	27	1005-597-3276	7	38		9	42
1005-420-5107	7	23	1005-597-3611	7	23	1005-830-1622	8	41
1005-420-5108	7	39	1005-597-3639	7	32		9	41
1005-420-5109	7	13	1005-597-3718	7	11	1005-830-1623	8	43
1005-420-5112	7	17	1005-597-3769	7	4		9	43
1005-420-5113	7	31	1005-597-3986	7	19	1005-830-1624	8	47
1005-420-5114	7	33	1005-597-4093	7	17		9	47
1005-420-5115	7	3	1005-597-5638	7	14	1005-830-1625	8	18
1005-420-5118	7	40	1005-597-5840	7	41		9	18
1005-442-2277	7	24	1005-600-4669	7	39	1005-830-1628	8	23
1005-442-2278	7	28	1005-602-2236	7	8		9	23
1005-442-2280	7	6	1005-622-1102	8	4	1005-830-1629	8	53
1005-464-1279	9	7		9	4		9	51
1005-464-1280	9	2	1005-658-6224	8	20	1005-830-1631	8	17
1005-471-3276	7	36		9	20		9	17
1005-471-3277	7	37	1005-658-6225	8	3	1005-830-2498	8	36
1005-471-3278	7	41		9	3		9	36
1005-471-3279	7	22	1005-704-8513	8	29	1005-830-2500	8	31
1005-471-3280	7	11		9	29		9	32
1005-471-3281	7	14	1005-712-8985	8	60	1005-830-2503	8	50
1005-471-3282	9	45		8	65		9	50
1005-471-3283	9	45	1005-712-9035	8	59	1005-830-2504	8	21
1005-471-3284	7	2		8	64		9	21
1005-471-3285	7	1	1005-715-7493	8	10	1005-830-2505	8	6
1005-471-3286	7	29		9	10		9	6
1005-471-3287	7	26	1005-715-7494	8	16	1005-830-2506	8	19
1005-523-0039	7	37		9	16		9	19
1005-523-8069	7	10	1005-715-7495	8	14	1005-830-2510	8	45
1005-523-8072	7	22		9	14	1005-830-2512	8	57

Section VIII. INDEX—FEDERAL STOCK NUMBER AND REFERENCE NUMBER CROSS-REFERENCE TO FIGURE AND ITEM NUMBER—Continued

<i>Stock Number</i>	<i>Figure No.</i>	<i>Item No.</i>	<i>Stock Number</i>	<i>Figure No.</i>	<i>Item No.</i>	<i>Stock Number</i>	<i>Figure No.</i>	<i>Item No.</i>
1005-830-2513	8	58	1005-830-2527	8	55	1095-716-0488	10	—
1005-830-2514	8	62		9	52	1095-716-0934	11	—
1005-830-2515	8	61	1005-830-2534	8	11	1095-840-1918	13	—
1005-830-2516	8	66		9	11	1095-973-0521	12	—
1005-830-2517	8	63	1005-869-7971	8	2	5305-133-5847	7	1
1005-830-2518	8	67	1005-906-6673	8	7	5305-133-5848	9	1
1005-830-2519	8	48		9	7	5305-597-3131	8	1
	9	48	1005-997-7855	8	35		9	1
1005-830-2521	8	52		9	35	5315-602-1841	7	7
1005-830-2526	8	54	1095-714-2700	14	—			
	9	53						

<i>Reference No.</i>	<i>Mfg Code</i>	<i>Fig. No.</i>	<i>Item No.</i>	<i>Reference No.</i>	<i>Mfg Code</i>	<i>Fig. No.</i>	<i>Item No.</i>
A56367	13629	7	6	5062	55358	8	53
B56357-1	13629	7	36			9	51
B56372	13629	7	29	5064	55358	3	17
C93116-3	13629	7	1			9	17
5002	55358	8	44	5071	55358	8	36
		9	44			9	36
5004	55358	8	38	5072	55358	8	33
		9	38			9	33
5005	55358	8	39	5073	55358	8	31
		9	39			9	32
5006	55358	8	9	5074	55358	8	20
		9	9			9	20
5014	55358	8	15	5076	55358	8	29
		9	15			9	29
5022	55358	8	12	5078	55358	8	50
		9	12			9	50
5023	55358	8	8	5079	55358	8	49
		9	8			9	49
5030	55358	8	13	5082	55358	9	9
		9	13	5083	55358	8	21
5034	55358	8	26			9	21
		9	26	5084	55358	8	6
5035	55358	9	17			9	6
5036	55358	8	46	5085	55358	8	19
		9	46			9	19
5042	55358	8	30	5086	55358	8	14
		9	31			9	14
5043	55358	8	42	5091	55358	8	4
		9	42			9	4
5044	55358	8	41	5093	55358	8	28
		9	41	5098	55358	8	45
5045	55358	8	43	5101	55358	8	57
		9	43	5102	55358	8	58
5046	55358	8	47	5103	55358	8	60
		9	47			8	65
5047	55358	8	18	5104	55358	8	59
		9	18			8	64
5049	55358	8	3	5105	55358	8	62
		9	3	5106	55358	8	61
5051	55358	9	28	5107	55358	8	66
5053	55358	8	22	5108	55358	8	63
		9	22	5109	55358	8	67
5054	55358	8	25	5112	55358	8	48
		9	25			9	48
5055	55358	8	23	5113	55358	8	24
		9	23			9	24

Reference No.	Mfg Code	Fig. No.	Item No.	Reference No.	Mfg Code	Fig. No.	Item No.
5114	55358	8	52	50408	13629	7	7
5118	55358	8	32	50409	72165	7	21
		9	30	50410	72165	7	20
5129	55358	8	5	50411	72165	7	30
		9	5	50412	72165	7	29
5133	55358	8	27	50414	72165	7	36
		9	27	50420	13629	7	11
5147	55358	9	42	50513	72165	7	33
5155	55358	8	51	50515	13629	7	8
		8	56	50516	72165	7	9
5191	55358	8	54	50517	72165	7	10
		9	53	50576	13629	7	4
5192	55358	8	55	50592	13629	7	19
		9	52	51082	13629	7	17
5357	55358	8	34	51160	13629	7	14
		9	34	51177	13629	7	41
5435	55358	8	16	52133	13629	7	37
		9	16	56063	13629	7	41
5454	55358	9	7	56076	13629	7	34
5455	55358	8	7	56078	13629	7	10
		9	7	56079	13629	7	8
5458	55358	8	10	56082	13629	7	22
		9	10	56086	13629	7	19
5488	55358	8	1	56087	13629	7	5
		9	1	56088	13629	7	32
5583	55358	8	40	56089	13629	7	7
		9	40	56090	13629	7	18
5585	55358	8	37	56091	13629	7	21
		9	37	56092	13629	7	20
5629	55358	8	11	56094	13629	7	30
		9	11	56095	13629	7	12
5683	55358	9	45	56099	13629	7	16
5685	55358	9	45	56101	13629	7	38
5936	55358	9	1	56102	13629	7	4
5959	55358	8	35	56103	13629	7	27
		9	35	56105	13629	7	28
50089	13629	7	39	56107	13629	7	24
50350	72165	7	3	56108	13629	7	23
50355	13629	7	12	56119	13629	7	39
50356	13629	7	13	56129	13629	7	13
50358	72165	7	16	56147	13629	7	11
50360	72165	7	18	56159	13629	7	17
50367	13629	7	40	56165	13629	7	14
50369	72165	7	28	56171	13629	7	31
50375	72165	7	31	56173	13629	7	33
50380	72165	7	34	56176	13629	7	3
50381	72165	7	35	93121	13629	7	1
50388	72165	7	15	95135	13629	7	40
50392	13629	7	38	95136	13629	7	26
50394	72165	7	22	5910301	19204	8	2
50395	72165	7	27	5910918	19204	9	2
50396	72165	7	26	5910964	19204	9	2
50398	13629	7	23	5911095	19204	7	2
50399	72165	7	24	7142700	19204	14	—
50400	72165	7	25	7160488	19204	10	—
50401	72165	7	37	7160934	19204	11	—
50403	72165	7	5	7791495	19204	12	—
50404	13629	7	32	8401918	19204	13	—
50407	72165	7	6	8430243	13629	7	2

By Order of the Secretary of the Army:

W. C. WESTMORELAND,
General, United States Army,
Chief of Staff.

Official:

KENNETH G. WICKHAM,
Major General, United States Army,
The Adjutant General.

Distribution:

To be distributed in accordance with DA Form 12-40 (qty rqr block No. 124) Organizational Maintenance requirements for Revolvers: All.

TM 9-1005-206-14 P/1—COMMERCIAL REVOLVERS—1971